

DESIGN ESSENTIA

architecture & design magazine



A Serene
Sanctuary of
Modern Living
Embedded in Tradition
by
Prashant Parmar.



featuring

**ARMENTANO
ARQUITETURA** (São Paulo)
(DE SPOTLIGHT - INTERNATIONAL FEATURE)

**SHAYONA
CONSULTANT**
(DE SPACES - ON COVER)

TALO LUXE

**23 DEGREES
DESIGN SHIFT**

WEESPACES

**BEAR SPACES
& CO**

**HIREN PATEL
ARCHITECTS + DESIGN**

**VANSHIKA
AGARWAL DESIGNS**

MELD DESIGN STUDIO
and many more
young architects & designers of India

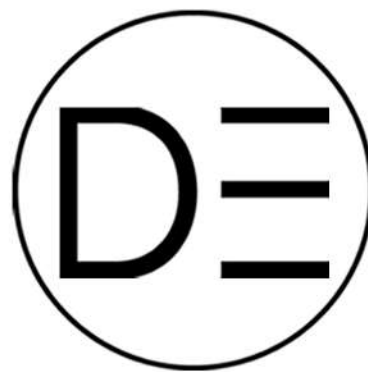
EVENTS // PAGE 14

(SINGAPORE, HELSINKI, EINDHOVEN)

@demagazineindia



DESIGN
ESSENTIAL
architecture & design magazine



DESIGN ESSENTIA

architecture & design magazine



DE PRODUCTS
SHOWCASE

introducing
'Talo Luxe' - a new chapter
in the 'Art of Bespoke Living'.

by
TALO HOMES,
JAIPUR

(PAGE 28)

@demagazineindia



DESIGN ESSENTIA

architecture & design magazine



DE SPOTLIGHT INTERVIEW

**JOÃO
ARMENTANO,**
principal architect at
Armentano Arquitetura
(São Paulo, Brazil)

(PAGE 39)

@demagazineindia



DESIGN ESSENTIA

architecture & design magazine



DE SPOTLIGHT INTERVIEW

**JOÃO
ARMENTANO**,
principal architect at
Armentano Arquitetura
(São Paulo, Brazil)

(PAGE 39)

open-plan
interiors,
blends of concrete,
wood, art, and
Brazilian design classics
define this São Paulo
residence.

@demagazineindia



DESIGN ESSENTIA

architecture & design magazine



DE SPACES

this Jaipur penthouse
beautifully brings
together the richness of heritage
with the ease of modern luxury.

by

**VANSHIKA AGARWAL
DESIGNS**

(PAGE 70)



@demagazineindia



DE Spaces

DESIGN ESSENTIA

architecture & design magazine



DE SPACES

Timeless Design &
Modern Luxury -
a beautiful homes
showcase
by
**MELD DESIGN
STUDIO**
(Mumbai)
(PAGE 76)



@demagazineindia



DE Spaces



DESIGN ESSENTIA (DE INDIA)

Architecture & Interior Design Magazine

The best of trends in architecture & design from India.



FOLLOW US ON INSTAGRAM

@demagazineindia

contents

DE Spotlight interview

//In conversation
with

João Armentano,
principal architect
at
Armentano Arquitetura,
São Paulo.

(page 39)



(on cover)

DE Spaces

//In conversation
with Prashant Parmar,
principal architect
at
Shayona Consultant,
Ahmedabad.

(page 48)



DE Products showcase

//in conversation with
Talo Homes, Jaipur.

(page 26)

contents



DE Spaces (design conversations)

//in conversation with
Meld Design Studio,
Mumbai

(page 70)

//in conversation with
Vanshika Agarwal
Designs, Jaipur

(page 76)

DE Directions

FIND - Global Summit 2025 (Singapore)
(page 14)

Helsinki Design Week 2025 (Finland)
(page 18)

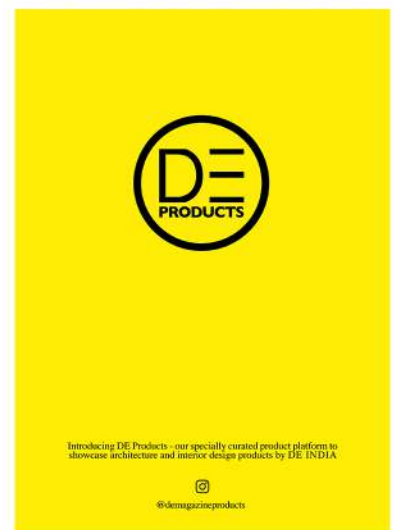
Dutch Design Week 2025 (Netherlands)
(page 22)



DE Products

Talo Luxe: A New Chapter in the Art
of Bespoke Living.
(page 28)

Museum at Home: RAVOH's signature
collection of legacy collaboration
and innovation.
(page 34)



contents



DE Spaces

'Courtyard House' in Hyderabad by
23 Degrees Design Shift
(page 54)

'The Earthy Hacienda' in Bangalore by
Weespaces
(page 58)

'Sitara' in Mumbai by
Bear Spaces and Co.
(page 62)

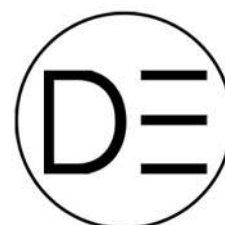
'Anand House' in Anand by
Hiren Patel Architects + Design
(page 66)



DE Discover

introducing young
architects and interior
designers of India

(page 83)





Editor's Note

Architecture and interior design have always been about more than walls and structures. They are about how we live, how we feel, and how space shapes our daily rituals. **Beautiful Homes** are not simply built; they are crafted with intention, layered with light, proportion, and memory. Thoughtful architecture has the power to transform the ordinary into something extraordinary, turning shelter into sanctuary.

In this issue of DE INDIA, we **celebrate the art of beautifully designed spaces and the subtle alchemy that turns a house into a home.** We highlight exceptional works by leading creatives, while also widening our lens to the international stage.

I had a wonderful interaction with **João Armentano**, a Brazilian architect designing wonders in **São Paulo**. João shares his design story with DE India. He talks about his two recent charming homes he designed in São Paulo and shares how Brazilian design is deeply rooted in diversity, nature and the dialogue between tradition & innovation.

As for what's trending on global design playgrounds - from **Singapore to Helsinki to Eindhoven**, the upcoming design calendar between August and October 2025 promises ideas, inspirations, and innovations that continue to expand the global conversation around design.

As an architect, I still hold close the memory of the first homes I designed a decade ago. Those formative projects that taught me about patience, detail, and above all, empathy. I sometimes miss the intensity of that creative grind, but curating DE INDIA offers a new joy: witnessing how young Indian designers are boldly reimagining the built

Anirudh Datta

(Founder & Editor-in-chief)

DESIGN ESSENTIA MAGAZINE

(DE INDIA + DE MIDDLE EAST+ DE ASIA)

environment. Their projects don't just impress, they evoke desire. They make you pause and think.

"I'd love to live in a home like that." That's what you would say when you absorb the design charm this edition.

Within these pages, you'll discover residences that whisper quiet elegance and public spaces that radiate with collective energy. You'll meet emerging furniture brands adding fresh character to interiors and explore conversations with visionaries who push the boundaries of what design can mean. This issue reinforces a truth we hold dear: design is never fixed. It evolves, adapts, and resonates differently with each of us making it as alive and personal as the people it serves.

As you move through this edition, I hope you find yourself inspired, not only by the beauty of these projects but by the spirit they embody. Design at its best is not just about aesthetics; it's about creating spaces that nurture, connect, and endure. May these stories encourage you to look at your own surroundings with fresh eyes and remind you that **the most meaningful design is always the one that feels like home.**

Let's Talk Design with DE India.
Happy Reading.

DESIGN ESSENTIA

architecture & design magazine



A Serene
Sanctuary of
Modern Living
Embedded in Tradition
by
Prashant Parmar.



featuring

**ARMENTANO
ARQUITETURA** (São Paulo)
(DE SPOTLIGHT - INTERNATIONAL FEATURE)

**SHAYONA
CONSULTANT**
(DE SPACES - ON COVER)

TALO HOMES

**23 DEGREES
DESIGN SHIFT**

WEESPACES

**BEAR SPACES
& CO**

**HIREN PATEL
ARCHITECTS + DESIGN**

**VANSHIKA
AGARWAL DESIGNS**

MELD DESIGN STUDIO
and many more
young architects & designers of India

EVENTS // PAGE 14

(SINGAPORE, HELSINKI, EINDHOVEN)

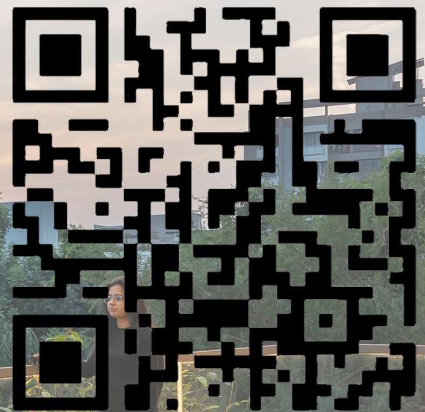
@demagazineindia



#LetsTalkDesign

DE INDIA

JULY - AUGUST 2025 EDITION



DE Directions

FIND Global Summit Singapore

Where Design Leadership Meets the Asian Market

FIND's three-day conference assembles rockstar speaker line-up to decode Asia's shifting design landscape. From interior design evolution, architectural frontiers to cultural identity and the rise of interdisciplinary practices.



FIND - Global Summit returns in 2025 with its most expansive edition yet, convening leading voices from design, architecture, and business to explore how creativity can respond to urgent global challenges and shape more intelligent, inclusive, and impactful built environments.

Across three days featuring over 60 speakers from 23 countries, the summit spans dozens of sessions of critical dialogue - from urban resilience and AI innovation to purposeful luxury and urban transformation. Building on the success of its 2024 edition, which attracted over 2600 attendees, the 2025 summit will take place from **11 to 13 September**

of the Singapore Design Week, at Marina Bay Sands Expo & Convention Centre, affirming its role as a key platform for Asia's design leadership community.

The FIND summit brings together a distinguished lineup of global firms and visionary thinkers across the fields of product and interior design, architecture, and business such as Büro Ole Scheeren, Geberit, Gensler, HBA, Henning Larsen, Marriot International, Ramboll, Skidmore, Owings & Merrill, Wimberly Allison Tong & Goo (WATG), and Zaha Hadid Architects. From Tokyo to London, Prague to Bangkok, and Shanghai to Milan, the summit's speaker community promises to be a catalyst for dialogue, innovation and meaningful cross-border collaboration.

"As organisers, we have to stay agile and ready to pivot alongside the industry - especially through dialogue and collaboration. Our aim is to spark creative exchanges with the '25 edition of the Summit that extend far beyond the show and help move the industry forward." - Carl Press, Event Director, FIND - Design Fair Asia

As the global design landscape evolves amid technological innovation, sustainability imperatives, and shifting economic currents, FIND - Global Summit 2025 takes on a sharper, more urgent tone. The programme is structured around three key pillars that will frame this year's conversations. The Architectural Frontiers pillar delves into how Asia-Pacific is transforming the global architectural landscape through the integration of advanced technology, cultural heritage, and circular design principles. The Asia-Pacific Blueprint explores the region's rise as a global epicentre of design, architecture, and refined creativity - distinguished by its masterful fusion of cultural depth and artisanal craftsmanship. The Transforming Spaces pillar underscores the region's leadership in redefining luxury spaces and experiences, pioneering a harmonious fusion of traditional expertise with contemporary innovations, creating spaces we love.



FIND
DESIGN FAIR
ASIA
11-13 SEPTEMBER 2025
MARINA BAY SANDS, SINGAPORE

FIND – Design Fair Asia 2025 in Singapore, welcomes the world through **National Pavilions**.

From returning favourites to exciting new country debuts, FIND spotlights the pulse of design innovation across Asia and Europe – all unfolding at Southeast Asia's most influential design fair.

1. SINGAPORE PAVILION

The Singapore Pavilion presents a dynamic showcase of the nation's design strengths, spanning sustainability, smart living, and material innovation. Highlights include Grobrix's modular vertical farming systems, Divine Creations Collective's craft-driven contemporary works, and Geberit's advanced bathroom solutions with a special discovery session. Cocoon Outdoor, Simply Wood, Arte Interior Furnishings, and Chee Geen Interior bring refined approaches to outdoor living, timber, wall finishes, and customised upholstery. Novah introduces ergonomic workspace systems, The Mill International unveils sustainable flooring, Cucina LUBE presents sleek Italian kitchens, and World of Woods celebrates premium timber furniture rooted in artisanal craftsmanship.

2. ITALIAN PAVILION

Backed by the Ministry of Foreign Affairs and ITA, the Italian Pavilion at FIND – Design Fair Asia 2025 highlights Italy's legacy of craftsmanship and innovation. The showcase features sustainable outdoor furniture, modular kitchen systems, premium game tables, ergonomic sleep solutions, and expressive surface materials inspired by Italy's stoneworking tradition, all reflecting contemporary living with timeless elegance.

3. CZECH PAVILION

The Czech Republic Pavilion at FIND – Design Fair Asia, curated by CzechTrade and supported by the Ministry of Industry and Trade, showcases the nation's rich heritage of craftsmanship and innovation. Highlights include cutting-edge bathroom solutions by RAVAK, award-winning urban furniture by MMCITE, exquisite lighting by Sans Souci and HUNAT, contemporary glass artistry from Pačinek and Halama, artisanal pens by Signati and Comeniv, and timeless crystal, porcelain, and pianos from Artisème and Petrof. Complementing the showcase are live performances and the unveiling of a collaborative glass sculpture, celebrating Czech design's fusion of tradition and modernity.

4. OTHERS

FIND is set to welcome a broader international presence with **France, Thailand, Hong Kong and Taiwan** making their debut and each bringing a distinct creative lens – from France's emphasis on material refinement, design-led sustainability and timeless form, to Thailand, where innovation and heritage come together and sustainable design is crafted to elevate global living. These pavilions underscore FIND's growing role as a global meeting point for design thought and expression.

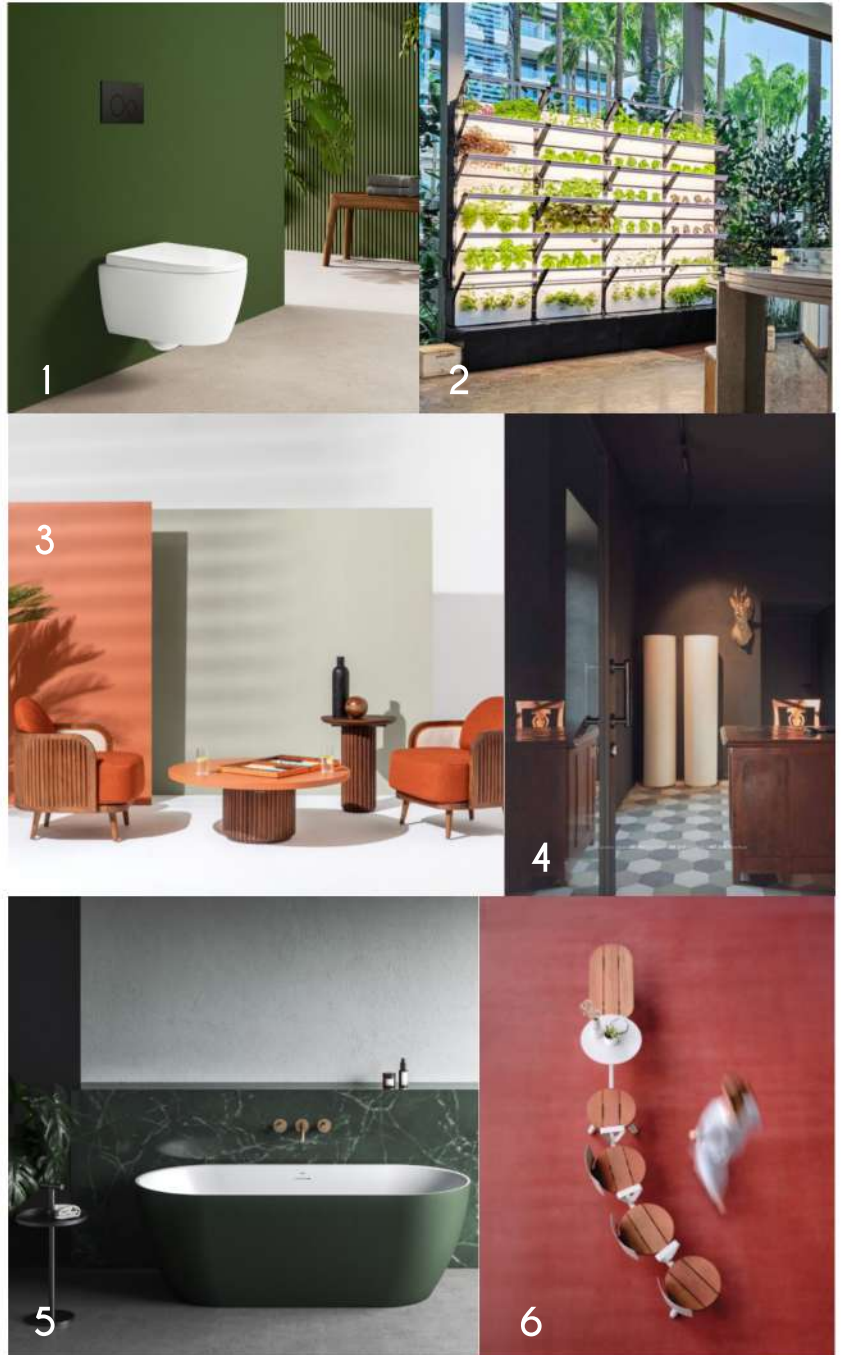



Image courtesy : FIND DESIGN FAIR

1 and 2 - Geberit; Grobrix for Singapore Pavilion
3 and 4 - Giardino di Legno; Grandinetti for Italian Pavilion
5 and 6 - RAVAK; MMCITE for Czech Pavilion

check more
on www.designessentiainmagazine.com

SHIFT



Architecture in Times
of Radical Change

CHICAGO
ARCHITECTURE
BIENNIAL

chicagoarchitecturebiennial.org

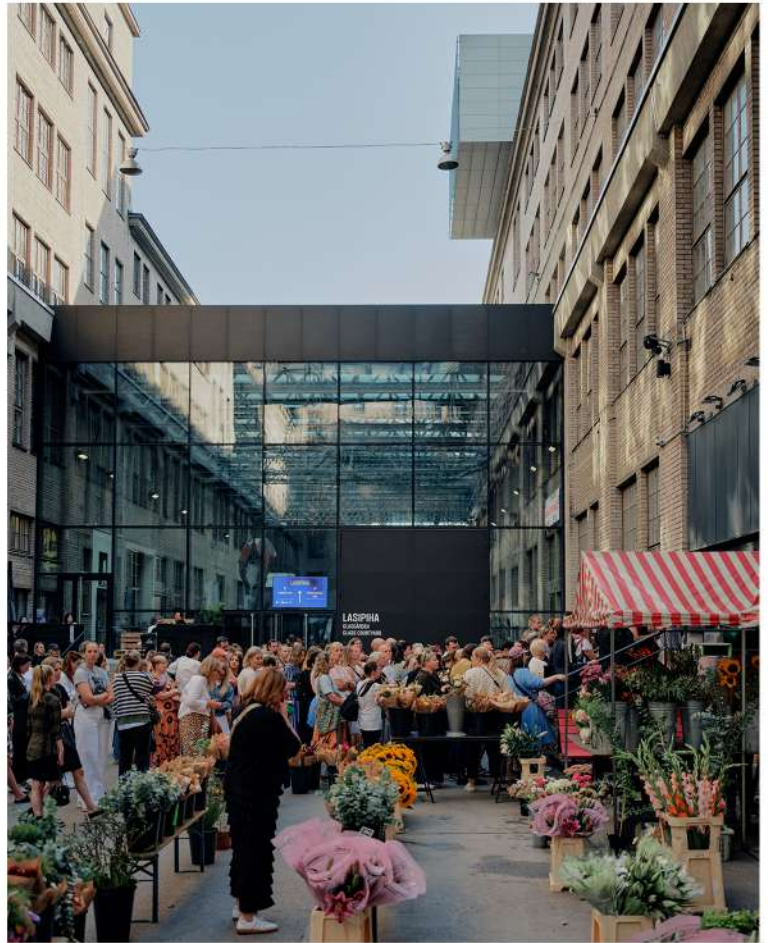
19 SEPTEMBER 2025 - 28 FEBRUARY 2026
CHICAGO, USA

DE Directions

Helsinki Design Week

A Celebration of Design and the Design of Happiness

Helsinki Design Week 2025 brings festivities to the whole city at Suomitalo, the historic commercial office building, completed in 1911, is located right in the heart of the city at Lönnrotinkatu 5.



The largest design and architecture festival in the Nordics, Helsinki Design Week (HDW), celebrates its **20th edition** from **5-15 September 2025** with the theme Festivities.

The festival's main **exhibition explores the design of happiness**, overseen by the internationally renowned curator Anniina Koivu. Tickets for the main events are now on sale.

The main venue for 2025 will be the historic Suomitalo in the heart of Helsinki. **Suomitalo** will host exhibitions, talks, launches, workshops and evening gatherings for both design professionals and the wider public. Beyond the main venue, the festival will spread across nearly one hundred design-related events throughout the Helsinki metropolitan area.

At the heart of the festival is the international main exhibition and symposium **HAPPINESS** – *Can happiness be designed?*, curated by **Anniina Koivu**. (on right)

The exhibition draws inspiration from the happiness cocktail – a combination of dopamine, serotonin, oxytocin and endorphins.

The exhibition features works by, among others, Eero Aarnio, Erwan Bouroullec, Oiva Toikka and Clara von Zweigbergk. The exhibition architecture is designed by XPO office, with a visual identity by Robbie Mahoney.

The symposium inspired by the exhibition will take place on 11 September in collaboration with the City of Helsinki. Speakers include Jennifer de Paola (University of Helsinki), Bjørnstjerne Christiansen (Superflex), Isabel Gibson (Isabel & Helen) and David Sim (Think Softer).

Festivities are conscious pauses to reflect on past achievements and focus our hopes towards the future. At Suomitato, the theme is interpreted through spatial installations by a wide range of inspiring design brands and designers, including Artek, Shimmer and SAAS Instruments. Marking its own 20th anniversary, restaurant Kuurna will open a pop-up restaurant on the top floor of Suomitato. Dinner reservations open on 21 August. During the festival, Suomitato will also host its own wine bar – no reservations required.

In addition, Suomitato will present daily talks on design and architecture. The programme includes the Weekly Talks series, a fashion theme day and salon-style fashion show, as well as expert discussions on architecture and design.



images; - Happiness Exhibition.

Anniina koivu - curator for 'Can happiness be designed?' (on left)

Installations by BertjanPot. (below)



Helsinki

Design

Week





Festival Theme 2025: Celebration

The 2025 theme for HDW is Celebration. Celebrations are conscious pauses to reflect on achievements or milestones and, most importantly, to express hopes for the future. At **Suomitalo**, (on right) this theme is interpreted by a group of exciting design brands and designers, who will create spatial installations in the rooms of the fourth floor. Participants include, among others, Artek and SAAS Instruments.

Back by popular demand, the much-loved pop-up restaurant by Kuurna will return, this time to the top floor of Suomitalo – fittingly, as Kuurna is also celebrating its 20th anniversary. The fourth floor will also host Collusion's wine bar, with bar snacks provided by Kuurna's new wine bar, Klaava.

Each day, Suomitalo will offer design- and architecture-themed discussions. The Weekly Talks series will cover topics such as new materials, urban development, and cross-disciplinary creativity. On 9 September, JKMM Architects and the Finnish National Museum will host a conversation on the topic of the museum's extension project and renovation. On Fashion Day, 10 September, Fashion Community Helsinki will organise a salon-style fashion show, and MA students from Aalto University will present and discuss their Kukkapuro design project, made from EU-grown cotton.

Other highlights during the week include the Ornamo Design Dialogue event for professionals on 9 September and CIRCLE, a social evening hosted by the Toivola Festival on 8 September, where six compelling voices come together to discuss life's big themes – money, love, power, beauty, and sustainable living.



check more
on www.designessentiainmagazine.com



dutch design week

25th edition

past
present
possible

18–26
October
Eindhoven

DE Directions

Dutch Design Week

Past. Present. Possible.

*Dutch Design Week
looks ahead with
its 25th edition at
Eindhoven.*



Dutch Design Week (DDW) returns for its **25th edition** with a theme that is both reflective and forward-looking: **Past. Present. Possible.** Taking place from **18 to 26 October 2025**, this internationally acclaimed festival transforms **Eindhoven**—a dynamic tech and design hub in the south of the Netherlands—into a city-wide celebration of design.

For nine days, thousands of designers—from emerging talents to renowned names—present their work across a wide range of studios, public squares, repurposed factories, and central venues throughout the city. Rather than showcasing polished, finished products, DDW champions raw ideas, bold questions, and immersive, sensory experiments that push the boundaries of design.

What began in 2001 as Designers Present has since evolved into an internationally renowned platform connecting design with technology, ethics, ecology, economics, and health. A grassroots movement driven by a passionate community of designers who built their own stage from the ground up.

The 25th edition stays true to this spirit: organised from the bottom up and rooted in the belief that design plays an active role in shaping tomorrow. Expect large-scale installations, interactive works, circular prototypes, and exploratory concepts.



"Dutch Design Week isn't your typical design exhibition; it's a vivid lab for experimentation," says **Miriam van der Lubbe**, Creative Head of DDW.

"It's where audiences, professionals, businesses, and students all come together to test ideas, question assumptions, and imagine new futures."

"This 25th edition is grounded in the belief that design is never finished. And that's exactly the point", Miriam adds.

"Past. Present. Possible. is more than just a theme. It's a mindset. One that encourages us to think in terms of possibilities rather than fixed solutions. To make space for the unfinished, the unknown, the not-yet. That's where design thrives."

(on left)

Miriam van der Lubbe,
Creative Head of DDW.

(below)

Econario' (2022) by
Thijs Biersteker in collaboration
with Natural History Museum
London.
photographer:
Thijs Biersteker, Jerome Fischer



**dutch
design
week**

'The city as a stage for design'

During Dutch Design Week 2025 (18-26 October 2025), Eindhoven once again transforms into an open-air gallery. Across the city's most prominent squares and locations, eleven large-scale **installations** by international designers will take shape. From new ways of generating

(view other installations on next page)

Eleven large-scale projects, exhibitions, and installations will take centre stage during Dutch Design Week 2025, landing at some of Eindhoven's most prominent locations, squares, and public spaces. Explore the selected projects developed in collaboration with Dutch Design Foundation and Bureau Binnenstad Eindhoven.

1. THE WATER BASIN TOTEM

Reflect on your water use.

The Water Basin Totem is a monumental installation that demonstrates the power of reuse and draws attention to water issues in Africa. Made from recycled construction materials and inspired by everyday water basins from West African households, the piece invites visitors to reflect on our collective use of water and plastic.

2. RAIN CAFÉ

A water tank as a meeting place.

Rain Café is an interactive rainwater tank that visibly fills with every rainfall. It collects water for daily uses — from watering your garden to washing your hands — and doubles as a vibrant social hotspot. Take a seat around the tank in a lush, inviting setting complete with benches and tables. A clever system that makes water management both tangible and connecting.

3. ECONARIO

How political choices ripple through nature.

Political decisions that shape the future are often abstract. Econario makes this abstraction tangible. This striking, data-driven installation shows how today's political choices affect the living environment of tomorrow.

4. THE UMBRA PAVILION

Where solar energy becomes tangible.

The Umbra Pavilion is a public space installation made from the innovative solar textile HELIOTEX. The textile canopy unfolds as a sculptural form, rising like a kite into the blue sky. During the day, it offers cooling shade and a place to rest and dream, while the woven solar cells capture the sun's energy. As night falls, that energy returns — transformed into light and playful interaction. The Umbra Pavilion will offer you a glimpse of a future where solar energy is woven into daily life — tangible, shared, and accessible to all.

5. TOUCHING CELLULOSE_sense of crafting

Join in building a biobased future.

EduCrafting Pavilion is an evolving installation where you and fellow visitors build a pavilion from wood, hempcrete, and cellulose. Through workshops, you'll learn about and apply circular building techniques — from modular components to traditional wood joinery. Guided by experts from TU Delft and TH Köln, you'll discover how craftsmanship, biobased materials, and digital tools merge to shape sustainable design.



Image courtesy : DDW 2025

1. The Water Basin Totem (photographer : Salu Iwadi Studio)
2. Rain Café (photographer : Floris Schoonderbeek)

6. THE WAITING ROOM

A human glimpse behind the numbers of refugee reception.

The Waiting Room is an emergency tent, lined with reclaimed wood from bed frames used at a Dutch asylum centre in Bleskensgraaf. Inside, you'll find bunk beds identical to those in more than 300 reception centres across the Netherlands. Take a seat and listen to personal stories from residents, sharing what it's like to live in a reception facility. This project is a collaboration with Planemos, the Netherlands Red Cross, and Eindhoven reception centres Wasbeer and Pauw.

7. FACTORY 5.0

A living pavilion that breaks down what industry has built.

Factory 5.0 is an experimental pavilion where 10,000 mealworms digest polystyrene foam panels — a radical rethinking of architecture as temporary, living, and regenerative. The project raises questions about the future of construction, circularity, and the role of design in ecological restoration. What remains are “memory objects” — traces of transformation and symbols of a post-carbon future.

8. MENHIR

Make sound visible.

Menhir is an endless loop of sound and form. This interactive installation responds to live-tested frequencies, continuously shaping an ongoing soundscape with no beginning or end. Through absorption and reflection, you experience Menhir from every angle.

9. SONIC MAZE

Let's get lost together!

In times of division and digital distance, SONIC MAZE invites you to wander together and reconnect. This large-scale inflatable installation by mesure studio and ultimo intimo stimulates the senses and serves as a reminder of the power of togetherness. During Dutch Design Week, SONIC MAZE becomes a vibrant stage for sound, performance, and encounter.

10. CITY AT SEA LEVEL

What if the sea rises to eye level?

City at Sea Level is a spatial installation that presents climate change not as a distant scenario, but as an urgent reality. The installation immerses you in a submerged state, confronting you with the consequences of climate denial and inaction. It makes the abstract threat of rising sea levels tangible and deeply personal.



11. THE INSTITUTE FOR SAND GRAIN ELEVATION POLICY (IZH)

Raising the Netherlands, one grain of sand at a time.

Ever wanted to contribute to raising the Netherlands? Become a Sand Grain Distributor! The Institute for Sand Grain Elevation Policy (IZH) invites your help in creatively addressing soil subsidence and low sand levels in the Netherlands. Scatter a bag of sand and add your grain to the cause. In the on-site workshop, you can observe and track the process of counting and sorting sand. This project highlights how small actions can collectively create large-scale impact.

Image courtesy : DDW 2025

7. Factory 5.0 (photographer : Aditya Mandlik)

9. Sonic Maze (photo courtesy : mesure studio x ultimo intimo)

10. City at Sea Level

check more
on www.designessentiainmagazine.com

제5회
서울도시건축
비엔날레
2025

서울
서울
서울
서울

서울

A GLOBAL CONFERENCE
27-28 SEPTEMBER,
CITY HALL, SEOUL

EMOTIONAL CITY

THE 5TH SEOUL BIENNALE
OF ARCHITECTURE AND
URBANISM 2025



SEOUL BIENNALE OF ARCHITECTURE
AND URBANISM 2025

1 SEPTEMBER - 31 OCTOBER 2025
SEOUL, SOUTH KOREA

WWW.SEOULBIENNALE.ORG/FRONT/KOR/INDEX.DO



Introducing DE Products;
a specially curated product platform to showcase
architecture & interior design products by DE INDIA



@demagazineproducts



Talo Luxe:
A New
Chapter
in the
'Art of
Bespoke Living'

IN JAIPUR'S EVOLVING
LANDSCAPE OF LUXURY,
TALO STANDS AS A
DESTINATION WHERE
CREATIVITY FINDS FORM,
AND EVERY CREATION IS
DESTINED TO BECOME A
MODERN HEIRLOOM.

Talo Luxe, Jaipur
Photographer : Studio Bluora



Siddharth Jain and Purvi Jain (from right)
(principal designers at TALO HOMES, Jaipur)



In the heart of **Jaipur**, where tradition and artistry run deep, a new name has emerged to redefine the language of luxury furniture — **Talo Luxe**. The brand's newly launched 6000 sq.ft. flagship store is not just a showroom, but a stage for timeless design, conceived for those who believe that furniture is more than function — it is the poetry of living spaces.

Talo Homes founded by architect **Siddharth Jain & Purvi Jain**, this store is a new chapter in the art of bespoke Living.

“

“At Talo, our design philosophy is rooted in the belief that furniture is not just functional, but also an extension of lifestyle and personality. We follow a modern, minimal yet soulful design language, where every piece blends form, function, and emotion. Our work balances contemporary global aesthetics with a sensitivity to Indian living—spacious when required, compact when needed, but always timeless.

We take inspiration from geometry, natural textures, and artisanal craftsmanship, ensuring every design is clean, purposeful, and versatile, while still telling a story.

says Siddharth.



DE products // in conversation with Talo Homes

What was your initial approach to redefine the language of luxury furniture with Talo Luxe?

SIDDHARTH : With **Talo Luxe**, our conceptual idea was to create a new narrative of luxury — one that goes beyond ornamentation and embraces modern sophistication, curated detailing, and bespoke craftsmanship.

Furniture Style & Design: The style draws inspiration from modern European minimalism, blended with rich Indian craftsmanship—soft curves, premium finishes, and bold material combinations like natural stone, metal inlays, and rich upholstery.

Inspiration: We wanted to redefine luxury as something understated yet impactful, moving away from “loud luxury” to a calmer, more refined aesthetic—luxury that speaks softly, but with presence.

Talo's latest flagship store in Jaipur - a new chapter in 'art of bespoke living' is now open to public. Share your vision in designing this poetic space in Jaipur that reflects timeless design and something that also glorifies the Pink City traditions?

SIDDHARTH : Designing the Jaipur flagship was about creating a journey of discovery, where each corner narrates the art of bespoke living. The vision was twofold:

Timeless Modernity: The store reflects a poetic, timeless language with clean architectural lines, muted tones, and curated lighting that allows each furniture piece to feel like art.

Homage to Jaipur's Heritage: At the same time, the design celebrates the soul of the Pink City—borrowing from its arches, jali work, and terracotta hues, but interpreting them in a contemporary, global manner. The idea was to create not just a showroom, but a living gallery—a space where modern luxury meets cultural roots, inviting customers to experience furniture as lifestyle.

Talo Luxe, Jaipur
Photographer : Studio Bluora





Share with us your top 2 favorite products from your latest luxe collection, creating an ideal interior setup for a home that speaks modern luxe.

SIDDHARTH : .

The Red Levante Dining Table (above)

Crafted entirely in exquisite Red Levante stone, this dining table is more than furniture – it is a sculptural statement of luxury. The natural veins and rich crimson hues of the stone create a dramatic canvas, making every piece one-of-a-kind. The table celebrates the raw magnificence of stone in its purest form, retaining its strength and elegance without dilution.

Palazzo Carved Sofa (on left)

This carved sofa, adorned with delicate gold leafing in an antique finish, is a celebration of India's timeless artistry. Each curve and motif reflects the hand-skill of master carpenters, while the shimmering leafing carries the touch of the traditional painter's brush—together creating a piece that is as much heirloom as it is furniture. The design draws inspiration from royal Indian courts and palatial living, where opulence was expressed through hand-carved detailing and fine gilding. The antique finish lends it a grace of aged beauty, making the sofa resonate with stories of heritage while still fitting seamlessly into modern interiors.



As product designers how would you move forward for next few years at Talo Luxe creating and maintaining interior trends in furniture foreseeing what the modern consumer needs.

SIDDHARTH : The future of luxury furniture lies in personalization, sustainability, and multifunctionality.

At Talo Luxe, we foresee and plan to offer:

• **Bespoke Personalization:** Consumers want furniture that reflects their lifestyle. Customizable materials, finishes, and modularity will be at the forefront.

• **Sustainable Luxury:** Use of responsibly sourced woods, eco-friendly fabrics, and durable designs that age beautifully will shape the future.

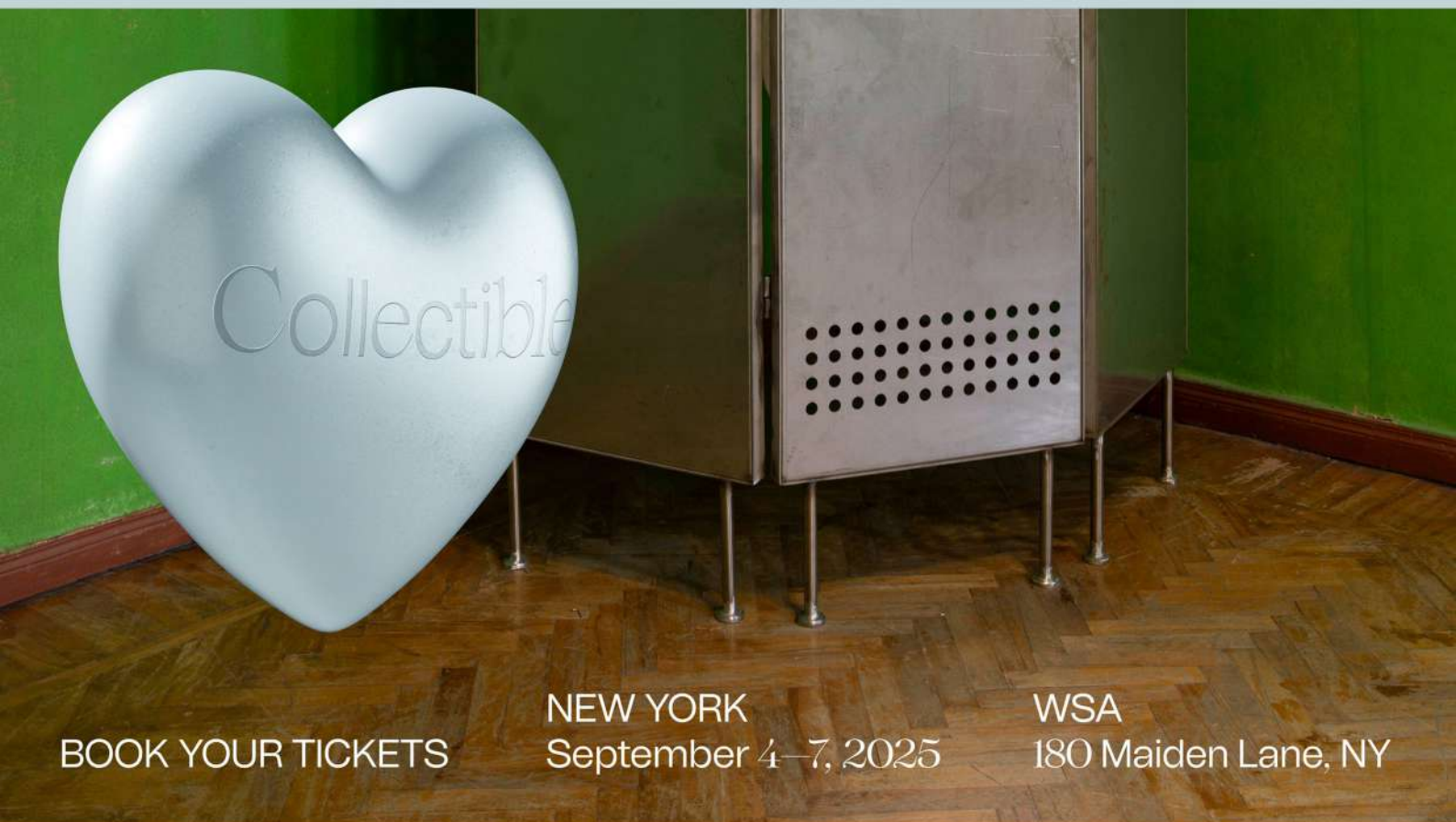
• **Technology Meets Craft:** Smart design integrations (hidden storage, adaptable lighting, ergonomic detailing) will meet artisanal craftsmanship.

• **Soft Modernism:** Clean lines with organic shapes, luxurious yet comforting materials like bouclé, suede, and natural stone, will define interiors.

Our goal is to make **Talo Luxe** a pioneer in “**quiet luxury**”—timeless, global, and relevant to the evolving modern consumer in India and beyond.

check more at
www.designessentiamagazine.com





BOOK YOUR TICKETS

NEW YORK
September 4–7, 2025

WSA
180 Maiden Lane, NY

COLLECTIBLE NEW YORK 2025 4-7 SEP, NEW YORK CITY, USA



Museum
at Home:
RAVOH's
signature
collection of legacy,
collaboration, and
innovation.





Ravish Vohra and Somya Vohra (from left)
(founders at RAVOH, Gurugram)



The Museum line is furniture as a collectible narrative, each piece a curated experience.

Drawing from three generations of craftsmanship, **Ravoh** combines **Ravish Vohra's** decades of expertise in bespoke furniture with **Somya Vohra's** contemporary design perspective.

Their debut collection, **'Museum'**, is shaped by an Indian consciousness and enriched through collaboration with celebrated Italian designer **Daniele Lo Scalzo Moscheri**. Each piece is created with quiet precision and lasting intent.

The collection is unveiled within Ravoh's 12,000-square-foot experience center in **Gurugram**, inviting one into a world of elegance and finesse, where furniture becomes a living archive of form and feeling.





Museum collection's sculptural forms evoke warmth and visual fluidity across pieces. One sees this unique design vocabulary in the Milano Dining Table's rounded form and gently arched base, or the Sistine Chair's playful, scooped shape. Even the angular Pence Chair avoids sharp edges, its leather boards are skillfully bent and shaped to suggest a soft, nearly sheet-like tactility. The Vault Island integrates cabinetry and customised storage, a quiet testament to Ravoh's devotion to both form and function.

The **materials speak for themselves:** Italian marble, fine leathers, Loro Piana upholstery, and meticulously finished woodwork all curated for longevity and touchable luxury. Museum isn't about trends or spectacle. It's about intentional living, quiet elegance, and a return to design that lasts. For those seeking stories of lasting craftsmanship, legacy, and a new Indian voice in global luxury, Museum offers a meaningful occupation.



True to its name, the collection transforms home interiors into spaces of museum-like stillness and refinement. The materials speak for themselves: Italian marble, fine leathers, Loro Piana upholstery, and meticulously finished woodwork all curated for longevity and touchable luxury.

check more at
www.designessentiainmagazine.com

'Museum' by RAVOH isn't about trends or spectacle. It's about intentional living, quiet elegance, and a return to design that lasts. For those seeking stories of lasting craftsmanship, legacy, and a new Indian voice in global luxury, Museum offers a meaningful occupation.





ONLINE SOURCE FOR
ARCHITECTURE & INTERIOR PRODUCTS.

//SHOWCASE YOUR PRODUCTS WITH DE INDIA.

#LetsTalkDesign

FOLLOW US ON INSTAGRAM @DEMAGAZINEPRODUCTS



ZÜRICH DESIGN WEEKS

4.–14.9.
2025

With the kind support of



Stadt Zürich
Stadtentwicklung

D.E.S.I.G.N. Foundation

over 40
locations

João Armentano,

is the partner director and principal architect at São Paulo based architecture and interior design studio - '**Armentano Arquitetura**'.

Over more than three decades of practice, his work has ranged from architectural projects on the scale of buildings to interior and object design.

DE Editor-in-chief **Anirudh Datta** had a detailed interaction with the Brazilian architect for **DE Spotlight interview series** where João shares his creative journey at Armentano Arquitetura along with his recent creations - two beautiful homes designed in São Paulo, Brazil.



DE Spotlight

IN CONVERSATION WITH

JOÃO ARMENTANO

PRINCIPAL ARCHITECT AT ARMENTANO ARQUITETURA (SÃO PAULO, BRAZIL)

DE Spotlight // interview

TEXT : ANIRUDH DATTA

ARMENTANO ARQUITETURA,

(AARQ) IS A SÃO PAULO BASED DESIGN FIRM LED BY JOÃO ARMENTANO THAT STANDS OUT FOR ITS MULTIDISCIPLINARY APPROACH, ENCOMPASSING PROJECTS OF VARIOUS SCALES — FROM FURNITURE DESIGN TO THE CONCEPTION OF COMPLETE BUILDINGS. THIS DIVERSE RANGE OF DEMANDS IS MET THROUGH A COMBINATION OF EXTENSIVE MARKET EXPERIENCE AND THE INNOVATIVE, CREATIVE SPIRIT OF ITS TEAM.

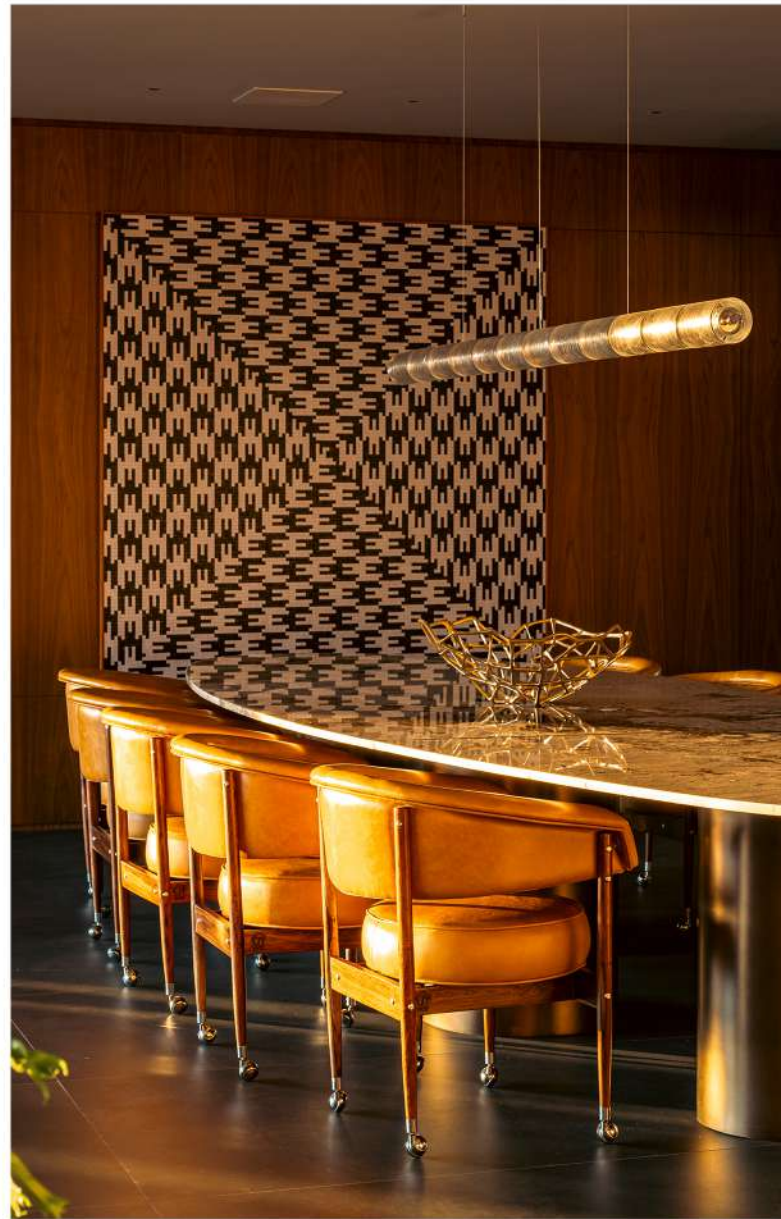
AD : What inspired you to pursue a career in Interior Design?

JOÃO : What inspired me the most was the challenge of understanding and translating people's unique desires into spaces. Each person's individuality, needs, and dreams are not only the starting point but also one of the greatest challenges in the creative process. This constant dialogue between functionality and emotion keeps my practice evolving, since no project is ever the same. The uniqueness of each story makes the work both inspiring and deeply engaging.

AD : Who were your early design heroes and role models?

JOÃO : One of my professional references is Oscar Niemeyer and his amazing projects – we've got his photo at the entrance of our office. I always go to the Ibirapuera Park and admire his works, such as the Oca, a masterpiece. I also love the work of Paulo Mendes da Rocha, who integrated environments with clean, linear architecture. One has wonderful plasticity with power, strength, simplicity, and elegance. The other is a master creator of forms.

P570, A RESIDENCE IN SÃO PAULO, BRAZIL
DESIGNED BY ARMENTANO ARQUITETURA.
PHOTOGRÁFICO : FAVARO JR.



AD : Tell us something about your journey in the inception of Armentano Arquitetura.

JOÃO : Armentano Arquitetura was born from the desire to create spaces that go beyond functionality and become meaningful experiences for those who inhabit them. Since the very beginning, our journey has been guided by curiosity and sensitivity to people's needs and desires. Each project is an opportunity to listen carefully, interpret aspirations, and translate them into designs that balance technique, creativity, and emotional connection. This constant dialogue between functionality and emotion has shaped the evolution of our practice over the years.

AD : Being from Brazil, is there any specific local design style/ elements you personally love to follow that represents your city and country?

JOÃO : Brazilian design is deeply rooted in diversity, nature, and the dialogue between tradition and innovation.

What inspires me the most is the organic connection between built space and the environment, the way natural light, ventilation, and raw materials such as wood, stone, and fibers become integral elements of architecture. I also value the fluidity and warmth that are part of Brazilian living, where indoor and outdoor spaces coexist harmoniously. These qualities, strongly present in my city and culture, naturally permeate our projects.

AD : What is your personal design language that you always opt to choose in interiors? Is there a specific interior palette that we can call the 'Armentano' way?

JOÃO : Our design language is centered on authenticity and balance. I do not believe in imposing a fixed aesthetic; I let each project emerge from its context, its purpose, and the people it serves.

Materials play a central role in this process, with their textures, colors, and natural characteristics shaping the atmosphere of a space. ***If there is something like an "Armentano way," it lies in creating interiors that are functional and emotionally resonant with its inhabitants, always prioritizing harmony between people, architecture, and the environment.***

AD : Tell us about your beautiful Sao Paulo apartment – P570. What was your concept for this open-plan interior palette?

JOÃO : The concept of Apartment P570 was to treat the view as the main design material. Located on the edge of Parque do Povo, the social area was designed as a continuous platform that merges interior and landscape. By integrating the balcony, living and dining areas into a seamless flow, we created a space with no visual barriers, where transparency and openness highlight the presence of the park and natural light.

The interior palette is intentionally sober, allowing the atmosphere to be defined by movement, light, and the ever-changing scenery outside.

*P570, A RESIDENCE IN SÃO PAULO, BRAZIL
DESIGNED BY ARMENTANO ARQUITETURA.
PHOTOGRAPHER : FAVARO JR.*





AD : How did the use of specific materiality, choice define this apartment's special character? Is the use of concrete and wood an important classic approach in Brazilian design language?

JOÃO : Materiality was key to shaping the apartment's unique character. Concrete, glass, and dark-toned wood form the foundation of the design, reinforcing both continuity and contrast.

Iconic Brazilian design pieces, such as Sérgio Rodrigues' Poltrona Beg, bring cultural depth and emotional resonance. Artworks by Cláudio Edinger and Tomie Ohtake add vibrant focal points that enrich the otherwise neutral palette. I believe the combination of concrete and wood is indeed a classic expression in Brazilian design. It reflects our dialogue between strength and warmth, structure and nature. This duality creates interiors that feel timeless, functional, and emotionally engaging, while staying connected to the landscape and cultural identity of Brazil.

*P570, A RESIDENCE IN SÃO PAULO, BRAZIL
DESIGNED BY ARMENTANO ARQUITETURA.
PHOTOGRÁFICO : FAVARO JR.*

check full project on www.designessentiainmagazine.com

AD : The P483 residence in Sao Paulo, another classic creation that contrasts light filled social areas. Share your design ideology that made this project happen. Any favorite elements?

JOÃO : The guiding idea behind P483 was to reinforce the lightness of the architecture while bringing depth through materiality and curated details. Marble, stone, wood, and glass create a sober yet expressive palette, balanced with iconic design pieces and artworks.

One of my favorite aspects is the seamless integration with the surrounding landscape, where interiors and gardens flow together. Another highlight is the private nightclub in the basement, a bold and theatrical counterpoint that adds surprise and personality to the residence.

*P483, A RESIDENCE IN SÃO PAULO, BRAZIL
INTERIOR DESIGN BY ARMENTANO ARQUITETURA
AND ARCHITECTURE BY MARCELO FRANCO.
PHOTOGRAPHER : MANUEL SÁ.*





The project contrasts light-filled social areas with layered, intimate private spaces.

P483, A RESIDENCE IN SÃO PAULO, BRAZIL
INTERIOR DESIGN BY ARMENTANO ARQUITETURA
AND ARCHITECTURE BY MARCELO FRANCO.
PHOTOGRAPHER : MANUEL SÁ.



AD : If we talk about design psychology with respect to emotions. What type of emotions would you say your designs evoke for the user that shows justice to your style creating perfection?

*P483, A RESIDENCE IN SÃO PAULO, BRAZIL
INNERIOR DESIGN BY ARMENTANO ARQUITETURA
AND ARCHITECTURE BY MARCELO FRANCO.*

JOÃO : I believe our designs aim to evoke emotions of **comfort, serenity, and joy**. Each space is created to resonate with the individuality of its users, fostering a sense of belonging and authenticity.

At the same time, we seek to bring lightness and purpose into everyday life, where design not only fulfills practical needs but also uplifts the spirit. For us, perfection is not about formality or rigidity, but about creating environments that **feel meaningful, harmonious, and deeply human**.

check full story at
www.designessentiainmagazine.com



@demagazinemiddleeast



Architecture & Interior Design Magazine
(DE MIDDLE EAST)

The best of trends in architecture & design from the Middle East & North Africa.

DESIGN
ESSENTIA
architecture & design magazine



SITARA, a residence in Mumbai, India
designed by Bear Spaces & Co.
photograph by Wabi-Sabi Studios.
(Page 62)

DE Spaces

A Serene Sanctuary of Modern Living embedded in Tradition

Nestled in the upmarket neighborhood of Naranpura, **Ahmedabad**, this residence - **VISAMO** is a south-facing NRI bungalow that redefines luxurious living through a flawless mix of contemporary armature and biophilic design.



DE Spaces (ON COVER)

SHAYONA CONSULTANT

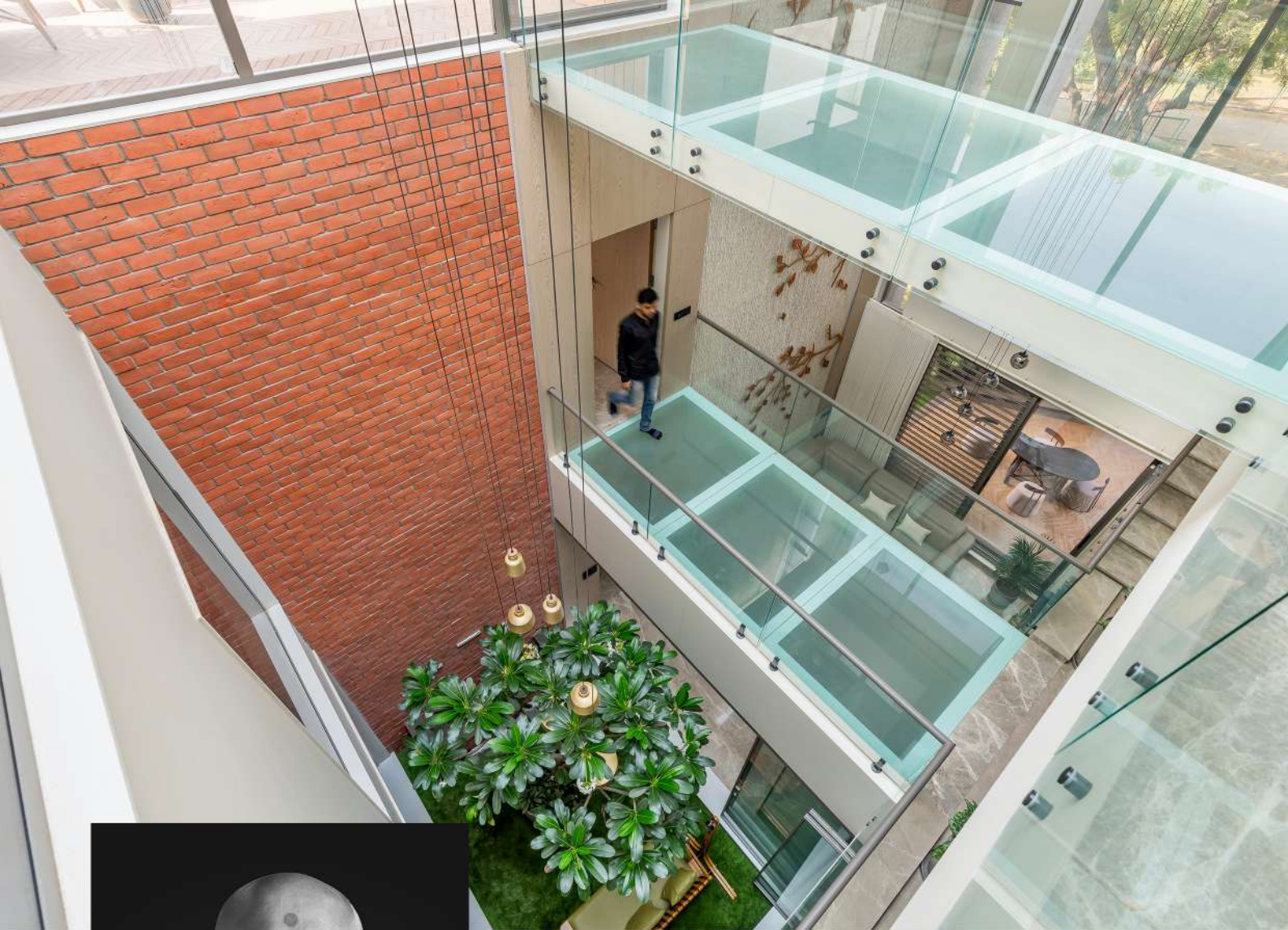
is an architecture and interior design practice based in **Ahmedabad**, India led by principal architect **Prashant Parmar**.

Design Team:

Prashant Parmar, Ashish Rathod, Vasavi Mehta, Nidhi Patel, Dhvani, Arpit, Ruchit.

Photographer : Inclined Studio

in
FOCUS



“Visamo is a dateless architectural expression of the customer's bournes — a biophilic retreat that celebrates rootedness, sustainability, and thoughtful luxury. Designed to evolve with time and foster well-being, it's a true sanctuary that integrates tradition, nature, and invention in equal measure.”

says Prashant Parmar,

In the quiet, upscale neighborhood of Naranpura in **Ahmedabad** stands **Visamo**, a south-facing bungalow that blends modern architecture with a deep connection to nature. Designed for a young couple returning to India after fifteen years in the United States, the home is both a personal retreat and a cultural homecoming. Their vision was to create a timeless sanctuary that honors Indian values while embracing the luxuries and comforts of contemporary life.

Spread across a 7,330-square-foot plot with a built-up area of nearly 10,000 square feet, the five-bedroom residence is organized around a dramatic triple-height courtyard. This central space, reminiscent of the traditional Indian chowk, is anchored by a fragrant Champa tree and a still waterbody. The courtyard not only draws daylight deep into the interiors but also carries a sense of openness and calm through every level of the home.

The design for this residence responds thoughtfully to its context. With neighboring houses pressing against the east and north boundaries, the architects placed service areas and circulation spaces along these edges to preserve privacy. By contrast, the south and west facades open generously to the outdoors with cantilevered terraces, garden balconies, and large openings that maximize natural light and encourage cross ventilation.



“

What were your favorite design elements associated with this project and why?

PRASHANT PARMAR:

The standout design element of Visamo is undoubtedly the triple-height central courtyard, a contemporary reimagining of the traditional Indian chowk. It is both the heart and the lungs of the home—bringing in abundant natural light, enabling cross-ventilation, and creating a visual anchor that connects every level.

What makes it special is its multi-sensory richness. The fragrance of the Champa tree, the sound of the waterbody, and the play of sunlight and shadows throughout the day create a constantly evolving atmosphere. Beyond its climatic function, the courtyard fosters emotional connection—family members can see, hear, and feel each other's presence across spaces, reinforcing a sense of togetherness.

It is a perfect blend of functionality and poetry—a space that responds to Ahmedabad's climate while evoking nostalgia and rootedness, making it the soul of the residence.

A layered façade with slate rammed earth cladding, WPC rustic planks, and gravestone-crete textures creates a dynamic visual character while icing continuity.

The innards echo the same harmony with Italian marble flooring, earthy textures, and handcrafted details. Every space from the elegant delineation room and tranquil pooja area to the luxurious Jacuzzi zone and immersive home theatre is designed for functionality, comfort, and connection.

The home also features a glass ground, (ON RIGHT) family sitting area with sculptural rudiments, and thoughtful spatial transitions that maintain a visual and emotional connection throughout. With sundecks attached to each bedroom and sundecks adorned with verdure, the design dissolves boundaries between indoors and outside.





VISAMO, A RESIDENCE IN AHMEDABAD, INDIA
DESIGNED BY SHAYONA CONSULTANT.
PHOTOGRAPHER : INCLINED STUDIO

“

What is your idea of a perfect residence a designer for any client? What shall be that prime design factor that makes a house a home?

PRASHANT PARMAR:

A perfect residence is one that feels like an extension of its inhabitants—a place where personal comfort and emotional connection come together. As designers, we focus on creating spaces that reflect the client's lifestyle, needs, and values. Whether it's a family home or a minimalist sanctuary, every design element should serve a purpose while enhancing the overall experience of the space.

The prime factor that transforms a house into a home is personalization. It's not just about aesthetics or functionality, but about infusing the space with the client's story, preferences, and emotions. Thoughtful details, such as curated spaces for relaxation, rooms designed for connection, and natural elements that bring warmth, all contribute to a deeper sense of belonging. Ultimately, a home should evoke feelings of peace and security, a place where the design goes beyond structure and truly becomes a sanctuary for the people who live in it.

Visamo is a dateless architectural expression of the customer's bournes — a **biophilic retreat** that celebrates rootedness, sustainability, and thoughtful luxury.

Designed to evolve with time and foster well-being, it's a true sanctuary that integrates tradition, nature, and invention in equal measure.



check full story at
www.designessentiainmagazine.com

Courtyard House : A Home Rooted in Tradition

The Courtyard House located in Mansanpally village, 40 kms away from **Hyderabad**, India is a modern twist to the local Manduva house. Designed for contemporary living, the courtyard house is a reminder of the simplicity and authenticity

of vernacular architecture in creating spaces that are as functional as they are serene. Designed by Hyderabad based architecture and interior design studio - **23 Degrees Design Shift.**

Principal Architects :

Srikanth Reddy, Raghuram and Neelesh Kumar.

Photographer : Ishita Sitwala





above;

Srikanth Reddy, Raghuram and Neelesh Kumar.
(principal architects at 23 Degrees Design Shift)

Rooted in tradition the Courtyard House by 23DDS reimagines Hyderabad's local vernacular architecture to include contemporary functionality of rural living.

"The brief provided by the client envisioned the expansion of a single bedroom farmhouse into a place where his extended family could live within the tranquil company of nature. This called for the addition of six bedrooms along with a fully functional kitchen and dining area, and expansive areas for communal living. The need for privacy and socialising further required the design to provide green areas for each room, along with seamless connectivity to communal open spaces. This requirement of the

This requirement of the brief was resolved by **reinterpreting the traditional Manduva house.**" says the architects.

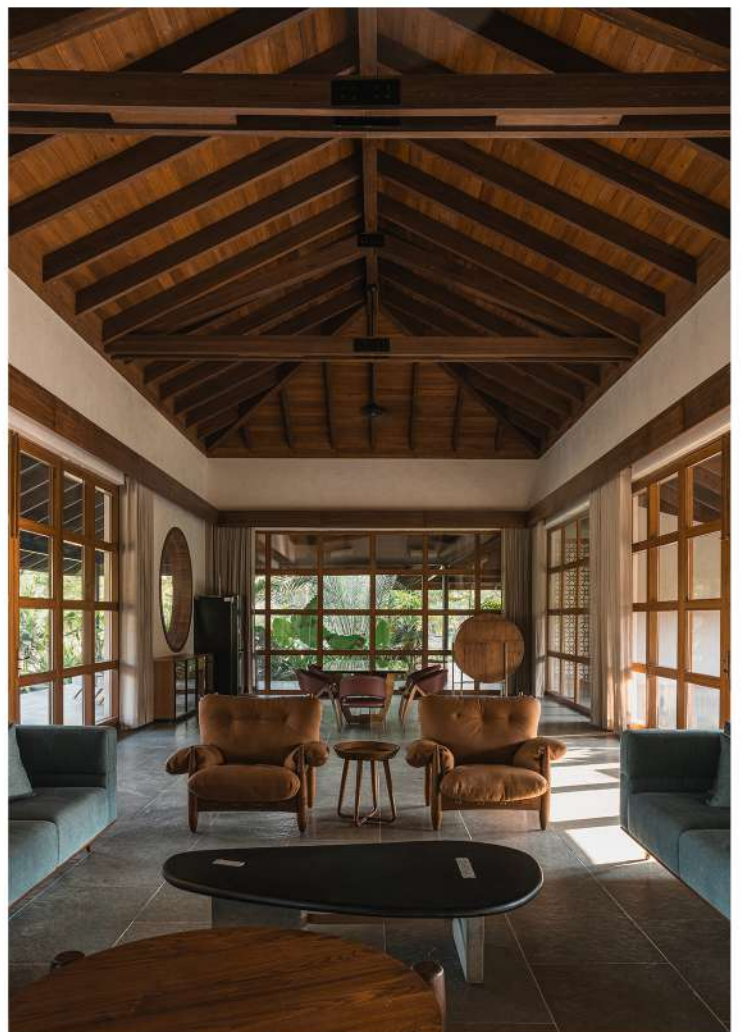
The **courtyard**, an integral part of Manduva house, has been reinterpreted to accommodate the elements of modern rural living.



As one approaches the farmhouse through a narrow passage, set within a mango orchard, one is greeted by an inviting building with expansive semi-open verandas. The journey continues across an entrance waterbody onto an entrance veranda, offering a view into the living and dining block. The verandas, sheltered by the extended wooden roof, provide much needed shelter and transition from the outdoors to the indoors.

Large glass panels and operable wooden framed doors in the living room, invites one to explore the courtyard. Brimming with greenery, the central courtyard provides a space for communal activities. A small water feature with a wooden suspended deck adds to the space's versatility and functions as a climatic regulator.

The interior follows the minimalist theme, expressing simplicity and functionality through its use of natural materials and earthy colour palette. Single leather-finish Kota stone renders the semi-open and closed spaces into a unified look, while civil walls, painted with a white micro-topping finish, adds a sense of austerity befitting the rural house. Visual interest in the design is generated by cladding feature walls with brown sandstone at strategic locations. Bright pops of colours and contrast are introduced through furniture.



Natural timber roof and Spanish Terrace tile establish the connection to the site's rural context, whereas large glass openings furthers this connection by providing unobstructed views of the nature outside. This scheme, devoid of embellishments, allows the real beauty of materials to remain exposed and celebrated, whilst ensuring that the architecture becomes a part of the natural scenery rather than standing out against it.

Courtyard House is a dialogue between tradition and modernity, where the essence of rural architecture is celebrated through contemporary design.

Every element of the design, from the central courtyard to exposed roof, reflects a commitment to creating spaces that honour its heritage without compromising the needs of today.

By tactfully combining natural materials to meet the spatial needs of a modern house, the architecture creates a home that feels both timeless and relevant, and by extension is a true embodiment of modern rural living that remains deeply connected to its roots.

check full story at
www.designessentiainmagazine.com



The Earthy Hacienda : A Californian Spirit in Indian Soil

Drawing inspiration from California's relaxed lifestyle, this **Bangalore** home embraces a palette of rust, sage, and soft beiges colours that mirror Indian tones but are presented in a contemporary, international way.

Designed by Bangalore based interior design studio - **Weespaces** led by principal designer Vinithra Amarnathan.

Principal Designer: **Vinithra Amarnathan.**

Photographer : Nayan Soni





"The vision that guided us was to create a modern, casual Californian hacienda while remaining deeply anchored in an Indian sensibility. What excites us most about this home is how it seamlessly balances two seemingly different design languages the rootedness of Indian tradition and the breezy spirit of California."

says Vinithra.

The layout unfolds fluidly: a formal and informal living room, dining area, kitchen, and bedroom occupy the ground floor, while the upper level comprises three additional bedrooms, a family-media room, and two terraces. The interplay of sensibilities is consistently reinforced: contemporary furniture is paired with traditional accents, art pieces narrate cultural stories, and the informal living room features a swing at once recalling Indian households and the easy charm of American

porches. Elements such as soft arches, exposed brick flooring, and patterned tiles along the staircase infuse the space with the spirit of a hacienda, while ensuring the interiors remain airy, light-filled, and modern.



Materials and detailing form another key layer of the design. Warm timber, used extensively across ceilings, furniture, and flooring, creates a visual thread of continuity, while black metal contrasts against stone to lend balance and modernity. Handmade patterned tiles, grassy textures, and exposed brick details punctuate the interiors, adding vibrancy and artisanal depth without overwhelming the home's calm base palette.

Signature touches elevate each space a custom mural in the living room with its soft, graceful brushstrokes that set a serene tone for the space; a printed fabric headboard in the master bedroom, complemented by layered furnishings under soaring vaulted ceilings; and timber rafters that recall the construction of traditional sloped-roof houses. Even outdoors, the brick-laid patio quietly extends into a tranquil open-air space, underscoring the hacienda influence while remaining attuned to its Indian context.



The Earthy Hacienda is a residence where the relaxed, sun-drenched vibe of California finds resonance with the earthy warmth of India. Envisioned as a forever home for a widely travelled couple, the project translates their experiences and memories into a cohesive whole.

Ultimately, the residence emerges as a dialogue between two worlds, a home that is as much a tribute to Indian heritage as it is to Californian ease.

At once global and local, it stands as a reflection of its owners' journeys, distilled into an architecture of warmth, comfort, and timeless character.

check full story at
www.designessentiainmagazine.com



Sitara : old Bollywood glamour + celestial elegance

This Bombay home with french-inspired architectural accents is a home of emotion and quiet drama. The home is layered, emotional, and built on instinct.

Designed by Mumbai based interior design studio - **Bear Spaces & Co** led by principal designers Pria Kanakia and Disha Vakharia.

Principal Designers:

Pria Kanakia, Disha Vakharia

Photographer : Wabi-Sabi Studios





The living room sets the tone with a bold checkerboard marble floor, each square chosen to echo the personalities of the family's dogs. The effect is both playful and nostalgic, reminiscent of stills from a forgotten film of the 1990s, somewhere between *The Talented Mr. Ripley* and *Great Expectations*.

Suspended above, custom chandeliers in cast metal do more than provide light. They sculpt the atmosphere of the room, striking a balance between presence and restraint. With their subtle nod to Hollywood Regency, they add glamour without tipping into imitation. They are not designed to shout. They are designed to resonate.

As one moves through the home, French-inspired architectural elements converse seamlessly with Indian craftsmanship. Cornices and trims bring Parisian structure, while vivid, embroidered artworks by Bobo Calcutta infuse the spaces with surreal energy that feels rooted in India. This juxtaposition creates a beautiful friction, not contrived but deeply cultural. These are not merely stylistic gestures. They are choices made with meaning.

The design language throughout is a **reimagining of Art Deco**, not just through its ornate elements but through atmosphere and emotion.

“

What were your favorite design elements associated with this project and why?

PRIA & DISHA :

Some details in Sitara were pure joy for us to create. The basin clad in tiny black-and-white piccolo tiles (PAGE 65) feels like a small jewel which is playful yet graphic.

We especially love the embroidered art by Bobo Calcutta (BELOW) and the life portrait by Abhay Sehgal (ON LEFT), which bring soul and character into the home. In the dining area, a chandelier (BELOW) from One O One Studios, cast in metal, is a true standout - sculptural yet warm, it sets the tone for the space beautifully.



What sets this home apart is not the abundance of objects but the rhythm of references that flow through its walls. It carries reverence for the past, rhythm in its layers, and an instinctive sense of curation. It does not seek to impress at first glance. Instead, it invites you to pause, to feel, and to remember. Every element, every corner, seems to exist not simply to be seen, but to be etched into memory.



“

What is your idea of a perfect residence a designer for any client? What shall be that prime design factor that makes a house a home?

PRIA & DISHA :

“Form follows function - that has been misunderstood. Form and function should be one, joined in a spiritual union.” Frank Lloyd Wright’s words sum it up for us.

A perfect residence isn’t about grandeur; it’s about how honestly it holds the lives within it. The most important design factor is that quiet, intuitive sense of belonging when you walk in and the space feels like it already knows you. It’s the light that greets you in the morning, the spot where you naturally pause with a coffee, the textures that only get better with time. Adaptability is key a home should evolve as its people do. Comfort, character, and a little bit of soul are what make four walls feel like home.



check full story at
www.designessentiainmagazine.com



on left;
Priya Kanakia and
Disha Vakharia

Sitara unfolds like a study in contrasts, layered with instinctive choices and an almost cinematic sense of intimacy. From the very first step inside, there is a quiet tension in the air, a kind of delicate drama that rests not in grand gestures but in the details that linger.

"Sitara" was imagined as a home with many moods much like its owners' creative lives. Each room has its own vibe, yet there's an unspoken connection between them. We leaned into an Art Deco spirit, but gave it a softer, more contemporary edge. A key feature is the custom curved-metal chandelier from Studio One O One sculptural, fluid, and quietly theatrical. The black-and-white checkerboard marble flooring was both a visual statement and a personal choice. the siblings two dogs

shed in exactly those colors, making it as practical as it is striking. Materials shift from warm veneer to sleek metal to rich textiles, always in conversation with each other. Light and shadow were treated like part of the architecture, shaping how each space feels throughout the day." says the designers.

“

Anand House : A Dialogue Between Nature and Design

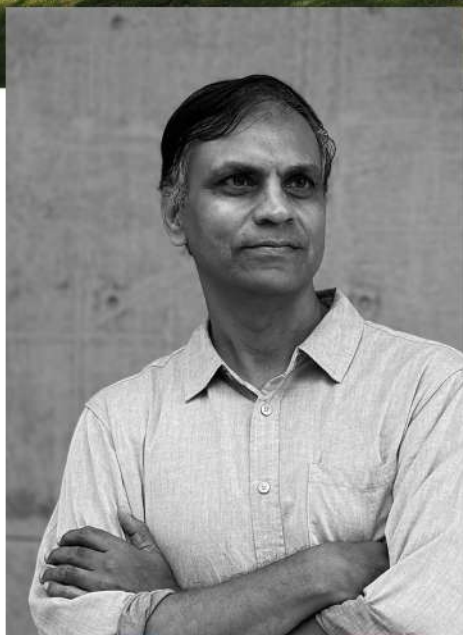
This 17,800 sq. ft. residence located in Anand, Gujarat blurs the boundaries between landscape, architecture, & interiors, creating a home where nature is not just the backdrop but an integral part of the design.

Designed by Ahmedabad based architecture and interior design studio - **Hiren Patel Architects + Design (HPAD)** led by principal architect Hiren Patel.

Principal Architect : **Hiren Patel**

Photographer : Samir Wadekar and Ishita Sitwala





"A seamless blend of spaces, light and textures makes this home a true expression of modern luxury, bringing a new standard of sophisticated living to Anand. Here courtyards spill into living spaces, and the lines between inside and outside dissolve into a seamless whole."

says Hiren Patel

The journey into the home begins long before the entrance. A semi-covered metal walkway winds through the lush gardens, with water features and sculptures thoughtfully placed on either side, creating an immersive arrival experience. As the landscape flows across the grounds, the architecture emerges. Cladded in natural mint stone, it offers the home a timeless aesthetic. Volumes are carved to welcome light, casting gentle shadows that change throughout the day. Some spaces open with

wide windows that frame the landscape. Then there are others which recede inward to create quiet courtyards and private terraces.

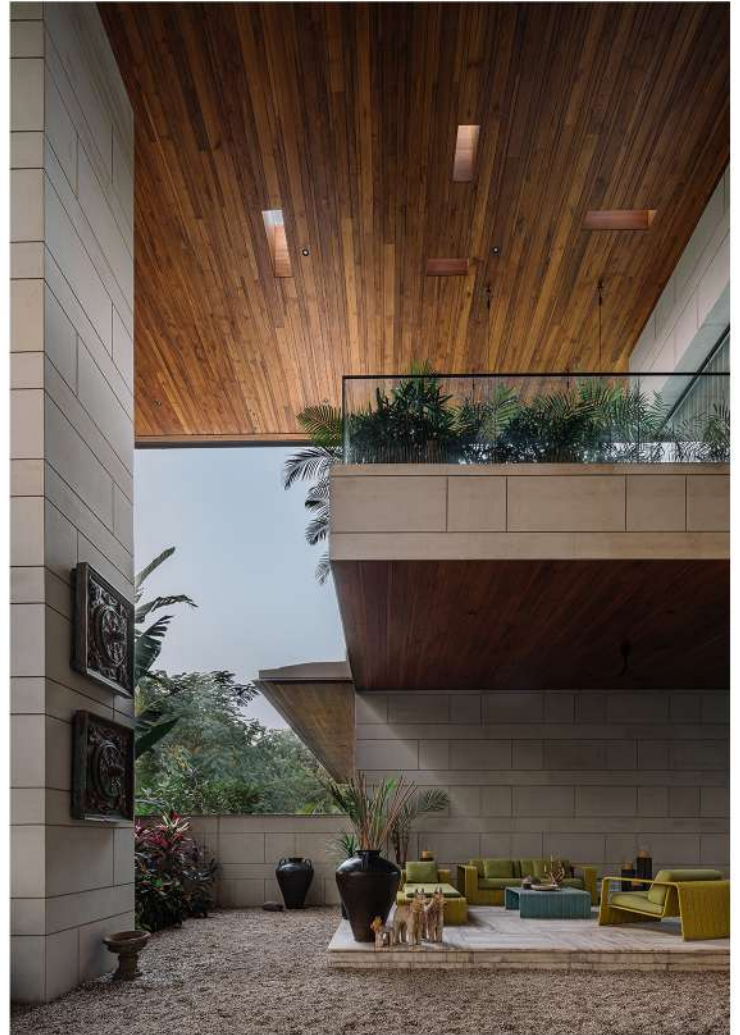
As one journeys through the landscape, they arrive at the entrance porch. Grand wooden doors stand at the threshold, opening into a foyer that feels both open and welcoming. A courtyard sits directly ahead, framing the first view from within. It serves as a reminder that even when indoors, nature is always close.



Above, a warm wooden ceiling stretches outward, seamlessly extending into the passageways that lead deeper into the residence. Sleek marble floors, high ceilings and finely crafted furniture set the tone for the refined spatial experience that awaits inside. Throughout the space, intricately detailed artwork and handpicked decor lend a sense of heritage and craft, balancing tradition with contemporary luxury.

Walking along the passage on one side of the foyer - a sculptural staircase comes into view. Staircases are signature elements of HPA's design philosophy, and this is no exception. Crafted from rich sheesham wood, the staircase rises in a double height space, enveloped in glazing that frames sweeping views of the surrounding landscape. Past this statement feature, the private spaces begin - the parents' room, the master room and the children's room. Each is designed as a self-contained retreat, complete with a personal courtyard, a cozy lounge, and a restful sleeping area.

Materials and textures flow naturally from one room to another - hand-knotted carpets anchor the spaces, soft velvets and hand stitched fabrics lend a plush elegance to the furniture, and rich wood accents add depth and warmth. Every layer comes together in a masterful composition to enhance the home's opulence.



Moving along, the home opens into a series of inviting spaces - the formal living room, an informal log, and wooden details that make it feel cozy - a perfect spot for unwinding with family and friends.

On the first floor, three bedrooms are designed with a cohesive aesthetic, each offering elevated views. A common lounge connects them, providing a shared yet intimate space. The highlight of this level is the infinity pool, lined with beautifully veined stone. Its water catches the changing light, mirroring the sky above. Positioned for privacy, it stretches toward the horizon, offering a quiet retreat that feels both grounded and endless. A serene courtyard nearby enhances the sense of openness and calm.

This home is not just about design - it is about living. Every space feels considered yet effortless, from the way light moves through the rooms to the seamless connection with nature. It is a place of comfort and quiet luxury, where architecture, materials, and landscape are seamlessly woven together.



Sushobhit : A Symphony of Heritage and Luxury

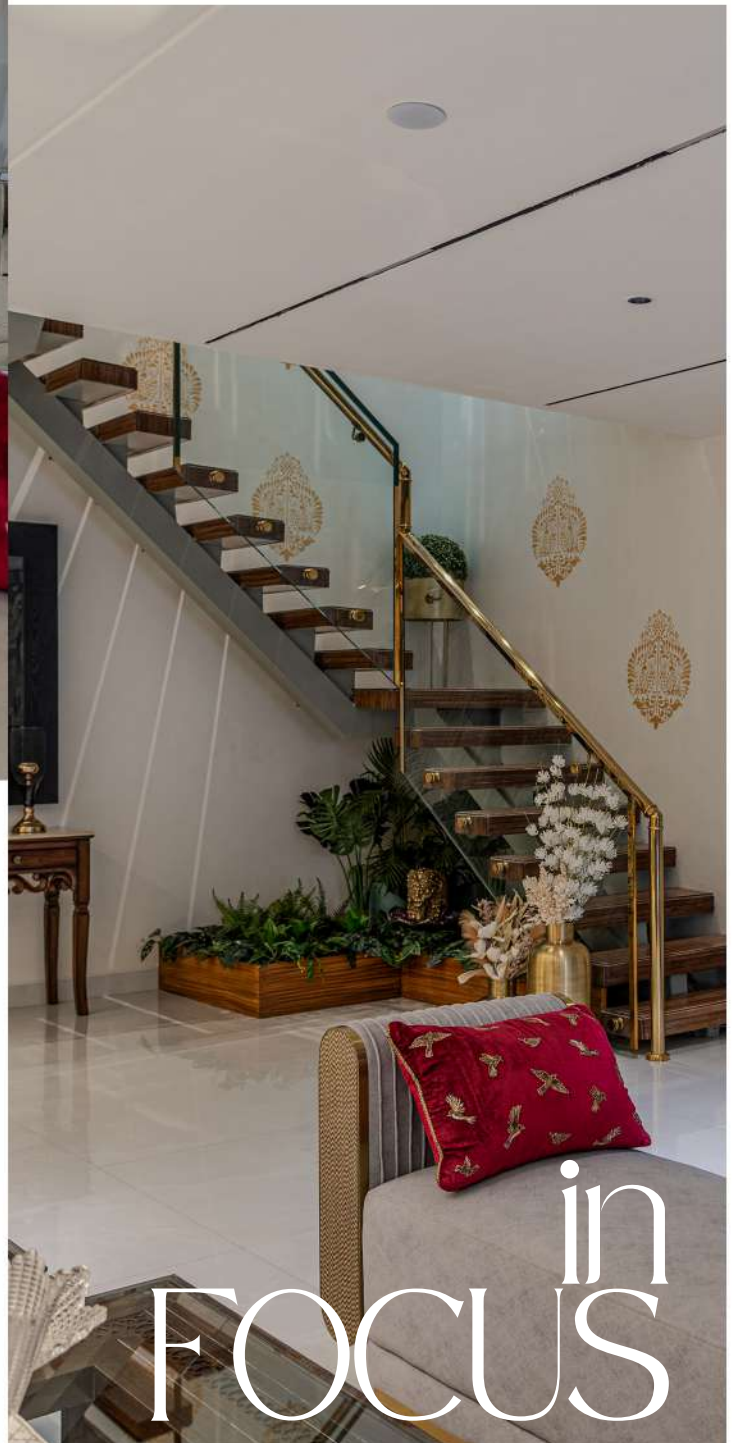
Nestled in the heart of **Jaipur**, India, **SUSHOBHIT** is a penthouse that beautifully brings together the richness of heritage with the ease of modern luxury. The home reflects the spirit of "Unity in Diversity" - where different cultures, generations, and design sensibilities come together in harmony.



in conversation with
VANSHIKA
AGARWAL DESIGNS

an interior design practice
based in **Jaipur**, India led by
principal designer **Vanshika**
Agarwal.

Photographer :
Aastha Chaturvedi - Space Yellow



in
FOCUS



"The brief was to the design simple yet meaningful : create a space that feels deeply personal, yet timeless. We translated this vision into a home that is layered, soulful, and thoughtfully detailed."

says Vanshika Agarwal

The experience begins right from the entrance, where a sacred, divine pathway welcomes you in. Designed to set the tone for the rest of the home, the entry features a wooden ceiling with gold foil accents and a traditional jhoomer, drawing inspiration from the regal charm of Rajasthan.

Elements of the five natural elements, or panchtatva, are subtly incorporated, grounding the space with a sense of spiritual balance and purpose.

"The concept behind the SUSHOBHIT project was to create a luxurious penthouse that reflects the client's refined taste and sophistication. We drew inspiration from the client's love for art, nature, and elegance, incorporating these elements into the design. The result is a space that exudes warmth, comfort, and luxury, perfect for relaxation and entertainment. Our design style shifts with the generations, and in this project, we've smartly shown the shift of culture." says Vanshika.

Spaces like the family lounge, dining room, and kitchen are brought to life with bespoke craftsmanship and heritage touches. The hand-painted pichwai artwork in the lounge, the painted ceiling above the grand dining area, and the delicate lotus and thikri motif at the backdrop all add layers of cultural meaning and aesthetic beauty. These details not only enhance the visual appeal but also create a deep emotional connection with the space.



“

What were your favorite design elements associated with this project and why?

VANSHIKA AGARWAL:

My favorite design elements in this project are the bespoke furniture pieces, intricate detailing, and the mandir. The custom-designed furniture adds a touch of elegance and sophistication to the space, while the intricate detailing showcases our attention to detail and craftsmanship.

The mandir (ON LEFT) is a standout feature, designed in thikri art with small pieces of mirror, representing the process of life through the lotus symbol. This element is not only beautiful but also meaningful, telling a story that resonates with the client's emotions and experiences.

The upper floor reflects a more contemporary mood, with clean lines, geometric forms, and practical solutions tailored for the younger generation.

A bar area, (ON RIGHT) made with a carved wooden panel and a semi precious slab, nods to the elegance of the Lucknowi era, while the office space, creatively designed using leftover wooden panels and a fossil wood tabletop, showcases the studio's commitment to sustainable design.

The terrace (BELOW) is a peaceful escape that adds to the charm of the home. With a small play area for children and a sunny nook for the elderly, it brings the feel of a traditional kothi to a modern penthouse setting. Every element, from lighting to hardware and artefacts, has been handpicked to match the family's refined taste.



An important aspect of this home is its alignment with Vastu Shastra. More than 80% of the home's design follows these ancient principles, ensuring a space that not only looks beautiful but also feels balanced and harmonious.

SUSHOBHIT isn't just a luxurious residence - it's a thoughtful expression of identity, legacy, and modern Indian living.

“

What is your idea of a perfect residence a designer for any client? What shall be that prime design factor that makes a house a home?

VANSHIKA AGARWAL:

As a designer, I believe that a perfect residence is one that reflects the client's personality, lifestyle, and preferences. It should be a space that is both functional and aesthetically pleasing, with a perfect balance of comfort, luxury, and sustainability. A perfect residence should also be designed to adapt to the client's changing needs over time, ensuring that it remains a haven for years to come.

For me, the prime design factor that makes a house a home is the incorporation of personal touches and emotional connections. A house becomes a home when it reflects the occupants' personality, values, and memories. In the **SUSHOBHIT** project, we've achieved this by incorporating personal elements, such as the client's bridal lengha fabric in the furniture and her ornaments framed in the room. These touches make the space truly special and meaningful to the client.



check full story at
www.designessentiainmagazine.com



LONDON DESIGN FESTIVAL ANNOUNCES PROGRAMME FOR 2025

13-21 SEPTEMBER 2025
londondesignfestival.com
#LDF25



Timeless
Design &
Modern Luxury -
a beautiful homes
showcase in
Mumbai.

in conversation with
MELD
DESIGN STUDIO

Zenab Lokhandwala & Altaf Saifee,
principal designers at MELD showcase their
recently designed residences in Mumbai.

Eclectic Symphony

Design Team : Zenab Lokhandwala , Altaf Saifee and
Adnan Sutterwala.

Photographer : Pulkit Sehgal

Tactile Silhouettes

Design Team : Altaf Saifee, Zenab Lokhandwala and
Adnan Suterwala

Photographer : Sameer Tawde



in
FOCUS



"We believe in the power of design to transform lives. Our philosophy centers on the harmonious integration of form, function, and the individual narratives of our clients. Each project is more than a design; it's a personal journey, crafted through a meticulous blending of aesthetic sensibilities with practical functionality to create spaces that resonate profoundly with those who inhabit them."

says Zenab and Altaf.

What is your idea of a perfect residence a designer for any client? What shall be that prime design factor that makes a house a home?

ZENAB & ALTAF:

At the heart of our approach is a profound understanding of our clients' visions, emotions, and needs. By deeply empathizing with each client, we ensure that our designs not only fulfill functional requirements but also reflect personal stories and enhance daily

experiences. This dedication to understanding helps create spaces that resonate personally and emotionally with each client, fostering environments that truly feel like home.

images;
Eclectic Symphony, Mumbai - Dining Area
(above)

Eclectic Symphony:

A Masterful Blend of Timeless Design and Modern Luxury.

This Mumbai home redefines residential design, offering a rich narrative that intertwines timeless artistry with modern luxury. Nestled in the tranquil enclave of Walkeshwar, this home transcends the ordinary, celebrating contrasts: old and new, rustic and refined, bold and understated.

images;

Eclectic Symphony, Mumbai - Informal & Formal Living Room (below)



MELD's recent Mumbai residence 'Eclectic Symphony' weaves a compelling design narrative. What was the concept behind its design inception? Tell us bit about this project.

ZENAB & ALTAF:

At its heart, the space is an embodiment of the homeowner's artistic vision, where the integration of textures, colors, and cultural inspirations creates an atmosphere that is both luxurious and intimate.

Eclectic Symphony redefines residential design, offering a rich narrative that intertwines timeless artistry with modern luxury. Every space in the home speaks a language of its own, marked by bespoke textures, curated art, and a balanced material palette. From sculptural elements inspired by cultural heritage to contemporary highlights, the home is both opulent and grounded—an intimate reflection of the homeowner's vision.

What was your favorite design elements and bespoke details associated with this project and why?

ZENAB & ALTAF:

The formal living room speaks to sophistication through a neutral palette of creams and beige, accented by vibrant teal and emerald green. Plush, curvaceous seating and a teal-accented glass table serve as the room's centerpiece, while coffered wood ceilings elevate the architectural grandeur of the space.

A nod to the homeowner's artistic vision, the formal living room features an eight-pointed star motif—symbolizing harmony and unity - integrated into a custom-designed chandelier. Gold and teal elements, along with engraved wall panels, add layers of intricate personalization.





images;
Eclectic Symphony, Mumbai - Master Bedroom (above)
Tactile Silhouettes, Mumbai - Dining (on right)

Share your design journey that gave the project 'Tactile Silhouettes' a serene interior character.

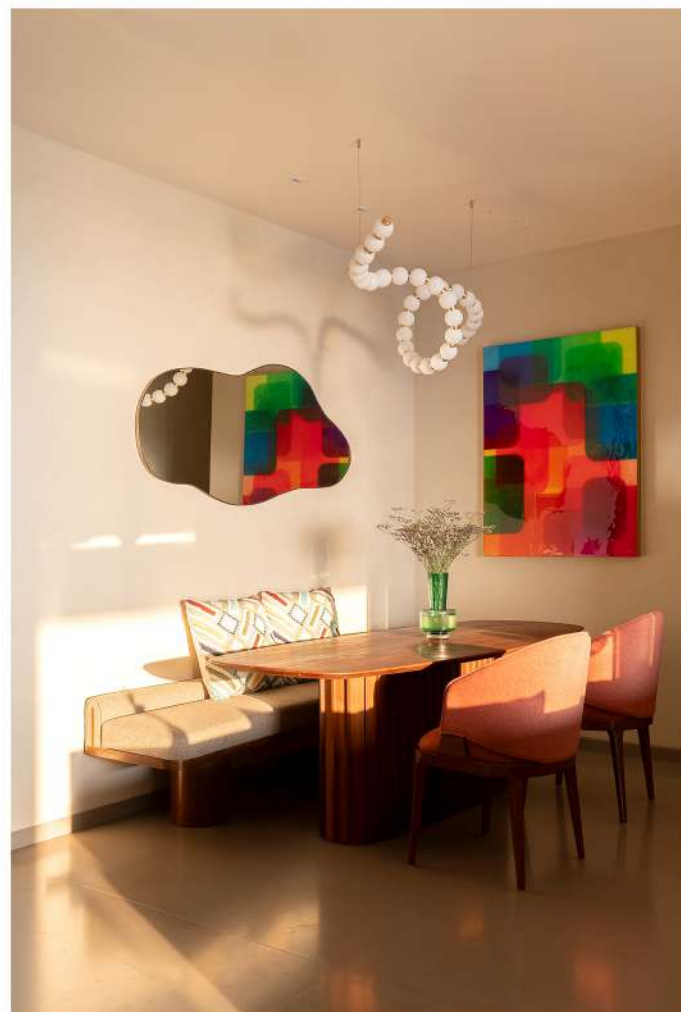
ZENAB & ALTAF:

At its heart, the space is an embodiment of the homeowner's artistic vision, where the integration of textures, colors, and cultural inspirations creates an atmosphere that is both luxurious and intimate.

Eclectic Symphony redefines residential design, offering a rich narrative that intertwines timeless artistry with modern luxury. Every space in the home speaks a language of its own, marked by bespoke textures, curated art, and a balanced material palette.

From sculptural elements inspired by cultural heritage to contemporary highlights, the home is both opulent and grounded—an intimate reflection of the homeowner's vision.

“



Tactile Silhouettes :

A Harmonious Blend of Architectural Nuance and Aesthetic Elegance.

Nestled in the bustling heart of Lower Parel, Mumbai, the 2,650 sq. ft. apartment is a testament to the synergy between architecture and design.

This Mumbai home embodies functional sophistication and personal expression.

images;
Tactile Silhouettes, Mumbai - Living Room and Bedroom (on right)

“

Share your ideology of materiality associated with its project.

ZENAB & ALTAF:

A wooden door with a geometric lattice opens into the home, where a beautiful screen inspired by Mondrian Art instantly catches the eye. Acting as a perforated barrier between the foyer and the living room, this screen has been executed using a 75mm thick Mint Stone with inserts of carefully selected colorful Indian stones.

Instead of the more common trend of using fluted MDF panels for wall décor, the designers chose the Indian Mint Stone to create a bespoke wall mural in the living area. However for the parent's room, they applied fluted panels in the more conventional way in Mint Stone itself.

All the wall claddings and sculptural stones were handpicked conscientiously from Udaipur, showcasing the brilliance of Indian artisans. Before execution all the panels were checked thoroughly and the team made sure that once installed, they looked completely seamless.



check full story at
www.designessentiainmagazine.com



@demagazineasia



Architecture & Interior Design Magazine
(DE ASIA)

The best of trends in architecture & design from South-East & East Asia.



INDONESIA
DESIGN
DISTRICT

IDW



INDONESIA DESIGN WEEK 2025

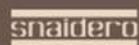
12 -20 SEPTEMBER

INDONESIA DESIGN DISTRICT

OFFICIAL BANK PARTNER:



MAIN SPONSOR:



KOHLER.  BOSCH

DESIGN
ESSENTIA
architecture & design magazine



DE Discover

*in conversation
with young
architects and
interior designers
of India.*

A residence in Ahmedabad, India designed by Designers Circle.
photograph by Inclined Studio.
(Page 82)

A Home Designed with Colour, Craft, & Comfort in Mind

by STUDIO GH

location : Pune, India

principal architects :
GAURI PATIL AND HERAMB PATIL

photographer : STUDIO COLOURBLIND

DESIGN
ESSENTIA
architecture & design magazine



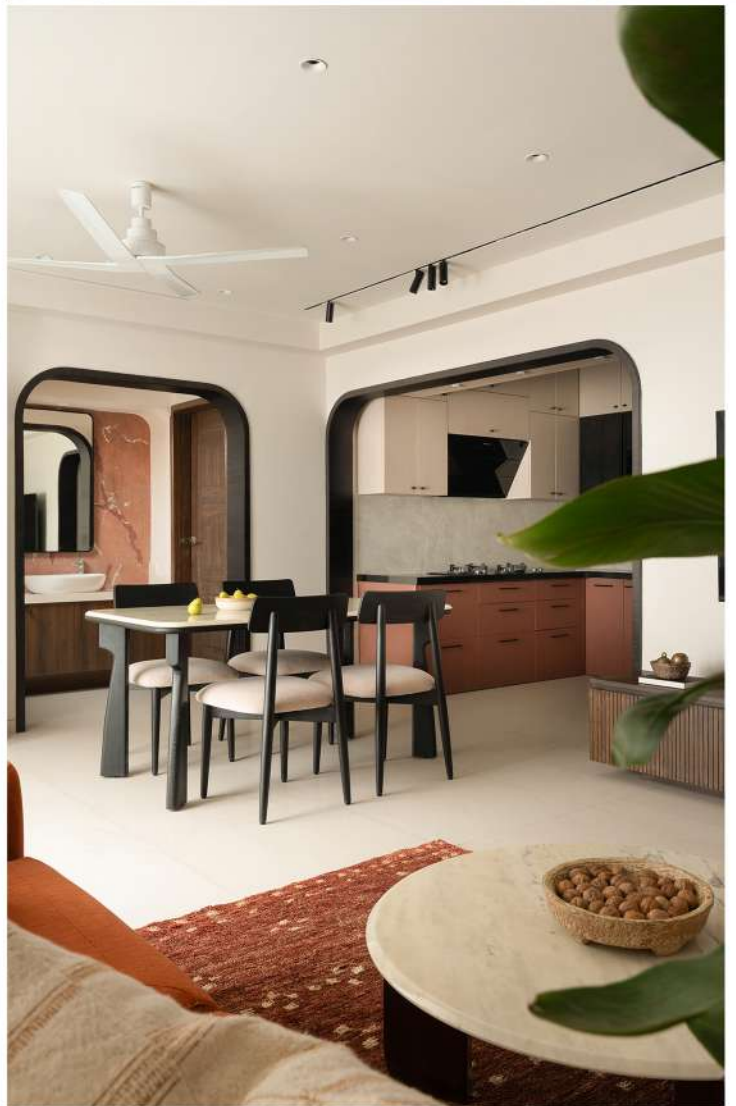
//BELOW;
GAURI PATIL & HERAMB PATIL
PRINCIPAL ARCHITECTS
AT STUDIO GH.

//ON RIGHT;
A HOME IN PUNE, MAHARASHTRA
PHOTOGRAPHER: STUDIO COLOURBLIND

TELL US SOMETHING ABOUT YOUR STUDIO'S DESIGN PHILOSOPHY?

STUDIO GH : At Studio GH we create spaces where colour meets restraint, texture adds depth, and every element serves both beauty and purpose. Our work blends contemporary clarity with timeless details, ensuring each space feels personal yet enduring.

We design with intention, balancing vibrance and calm, craft and comfort, so that every project stands apart in character and sophistication while truly belonging to those who live in it.



TELL US SOMETHING ABOUT THIS PROJECT? WHAT WAS THE CONCEPT BEHIND ITS DESIGN INCEPTION?

STUDIO GH : The concept of this Pune home began with the idea of creating a space that feels vibrant yet timeless.

We balanced bold, lively tones with warm, grounding neutrals, layering textures and finishes to add depth without overwhelming the space. Every element from the custom finishes to the carefully considered furniture was chosen to create a home that feels inviting, functional, and effortlessly stylish. At its core, the design celebrates colour, crafts each detail with intention, and ensures comfort is never compromised.

WHAT WAS YOUR FAVORITE DESIGN ELEMENTS ASSOCIATED WITH THIS PROJECT AND WHY?

STUDIO GH : One of our favourite design elements in this project is the use of black accents throughout the home. From the dining table and chairs to the entry console, wooden archways, and master bed, each piece was thoughtfully stained in black to create a sense of cohesion.

Even the kitchen counter, paired with glass cabinets, carries this detail. These accents anchor the vibrant tones and warm neutrals, tying the entire space together with a sophisticated, grounded feel.





WHAT IS YOUR IDEA OF A PERFECT RESIDENCE AS A DESIGNER FOR ANY CLIENT? WHAT SHALL BE THAT PRIME DESIGN FACTOR THAT MAKES A HOUSE A HOME?

STUDIO GH :

For us, there is no single definition of a “perfect” residence — it’s entirely subjective.

The ideal home is one that responds to the client’s needs, lifestyle, and aspirations, and our role is to shape those into a cohesive, thoughtful design solution. As for the prime factor that turns a house into a home, it’s the presence of personal memorabilia. No matter how well-designed a space is, it’s the layering of cherished memories, meaningful objects, and personal stories that truly brings warmth and soul into it.

check full story at
www.designessentiainmagazine.com

Basant Vihar by DESIGNER'S CIRCLE

location : Ahmedabad, India

principal designers :
RAJESH SHETH, KAVISH SHETH

photographer : INCLINED STUDIO



*//BELOW;
KAVISH SHETH
PRINCIPAL DESIGNER
AT DESIGNERS CIRCLE.*

*//ON RIGHT;
BASANT VIHAR, A RESIDENCE IN
AHMEDABAD, GUJARAT.
PHOTOGRAPHER: INCLINED STUDIO*

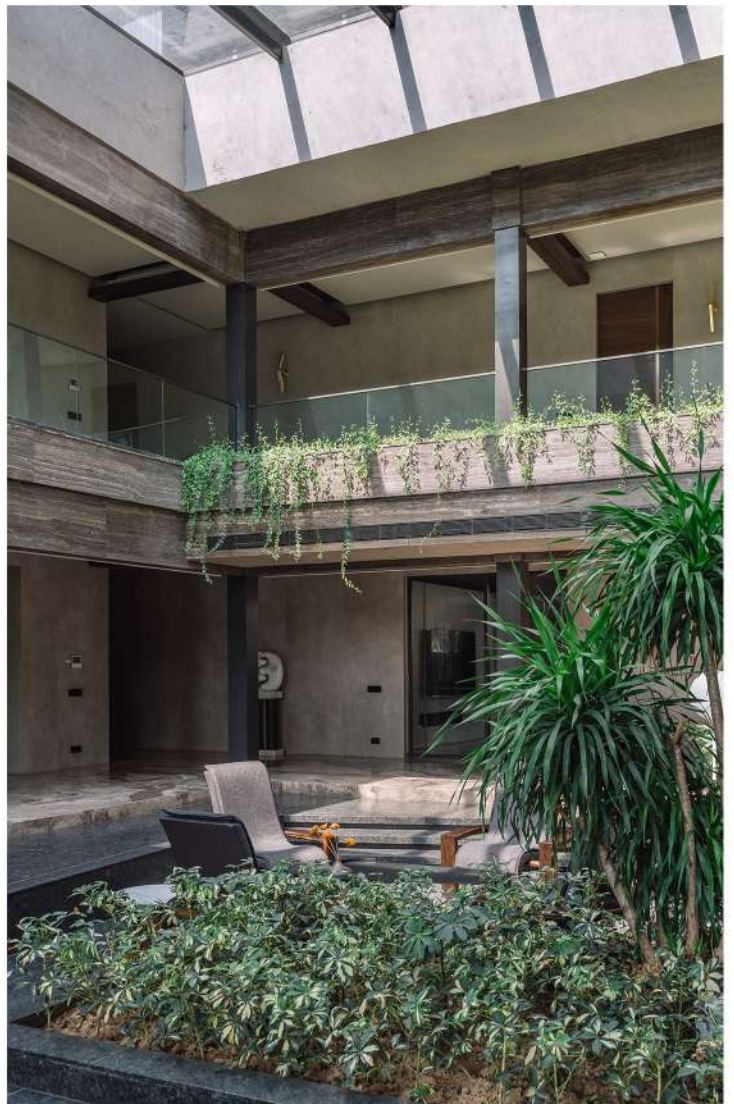
TELL US SOMETHING ABOUT YOUR STUDIO'S DESIGN PHILOSOPHY?

KAVISH : Our work at Designer's Circle is guided by three core philosophies.

Every space should reflect the client's lifestyle, personality, and story. We believe that design must be rooted in the lives of those who inhabit it.

Timeless design, purposeful utility. Our spaces are not just beautiful; they are built to last, both aesthetically and functionally.

The journey matters as much as the destination. We value the entire design process, ensuring it's as smooth, engaging, and memorable as the final result.



TELL US SOMETHING ABOUT THIS PROJECT? WHAT WAS THE CONCEPT BEHIND ITS DESIGN INCEPTION?

KAVISH : From the very beginning, the concept for this residence in Ahmedabad was aimed to craft a home that's both grand and deeply personal. Designed for two brothers, the central courtyard becomes the heart of the house—luxurious in its intention but grounded in how it brings their lives together.

The palette uses quietly elegant neutrals—ivory, beige, taupe, layered with tactile, natural materials like travertine, warm wood, veined stone, and marble. Each material is chosen not only for its refined quality, but also for how it feels authentic and inviting. Together, they create a timeless serenity that feels luxurious in essence, yet deeply rooted in natural poise.

WHAT WAS YOUR FAVORITE DESIGN ELEMENTS ASSOCIATED WITH THIS PROJECT AND WHY?

KAVISH : It's the mosaic mural of the man and horse in the double-height drawing room. It's not just decorative. It brings character, soul, and a touch of narrative to the space.

Against the serene travertine backdrop and enveloped by light through the glass walls, it feels like a moment of quiet storytelling within the home.





WHAT IS YOUR IDEA OF A PERFECT RESIDENCE AS A DESIGNER FOR ANY CLIENT? WHAT SHALL BE THAT PRIME DESIGN FACTOR THAT MAKES A HOUSE A HOME?

KAVISH :

We believe the perfect residence is one that evolves with its people — adapting to their routines, moods, and future dreams.

The magic ingredient? 'Meaningful personalization'.

It's about designing spaces that feel like the client from the very start—whether that's a sun lit courtyard, a kitchen for shared laughter, or a hallway that holds family stories. In short, when a home reflects who you are—and can grow with who you'll become—that's design done right.

check full story at
www.designessentiainmagazine.com

DE Discover

INTRODUCING YOUNG ARCHITECTS AND DESIGNERS OF INDIA

Kayjay Studio by STUDIO AARTARC

location : Delhi, India

principal designers :
VISHAKHA SAREEN, ANANT SAREEN

photographer : CREATIVE SHUTTER

DESIGN
ESSENTIAL
architecture & design magazine



*//BELOW;
VISHAKHA SAREEN, ANANT SAREEN.
PRINCIPAL DESIGNERS
AT STUDIO AARTARC.*

*//ON RIGHT;
KAYJAY STUDIO, IN DELHI.
PHOTOGRAPHER: CREATIVE SHUTTER*

TELL US SOMETHING ABOUT YOUR STUDIO'S DESIGN PHILOSOPHY?

VISHAKHA & ANANT : We believe that great design has the power to transform spaces and lives. Our architectural and interior design studio is committed to creating innovative, functional, and visually inspiring environments that elevate the human experience.

We combine a deep understanding of design principles with a passion for creativity to craft spaces that are both timeless and contemporary, blending aesthetics with practicality.



TELL US SOMETHING ABOUT THIS
PROJECT? WHAT WAS THE CONCEPT
BEHIND ITS DESIGN INCEPTION?

VISHAKHA & ANANT : Located in Delhi, India this 500 sq ft fashion, is a refined composition of spatial fluidity, light, and material subtlety. The design begins with an entry through a landscaped patio - a calm, open air space that creates a gentle buffer from the bustle outside.

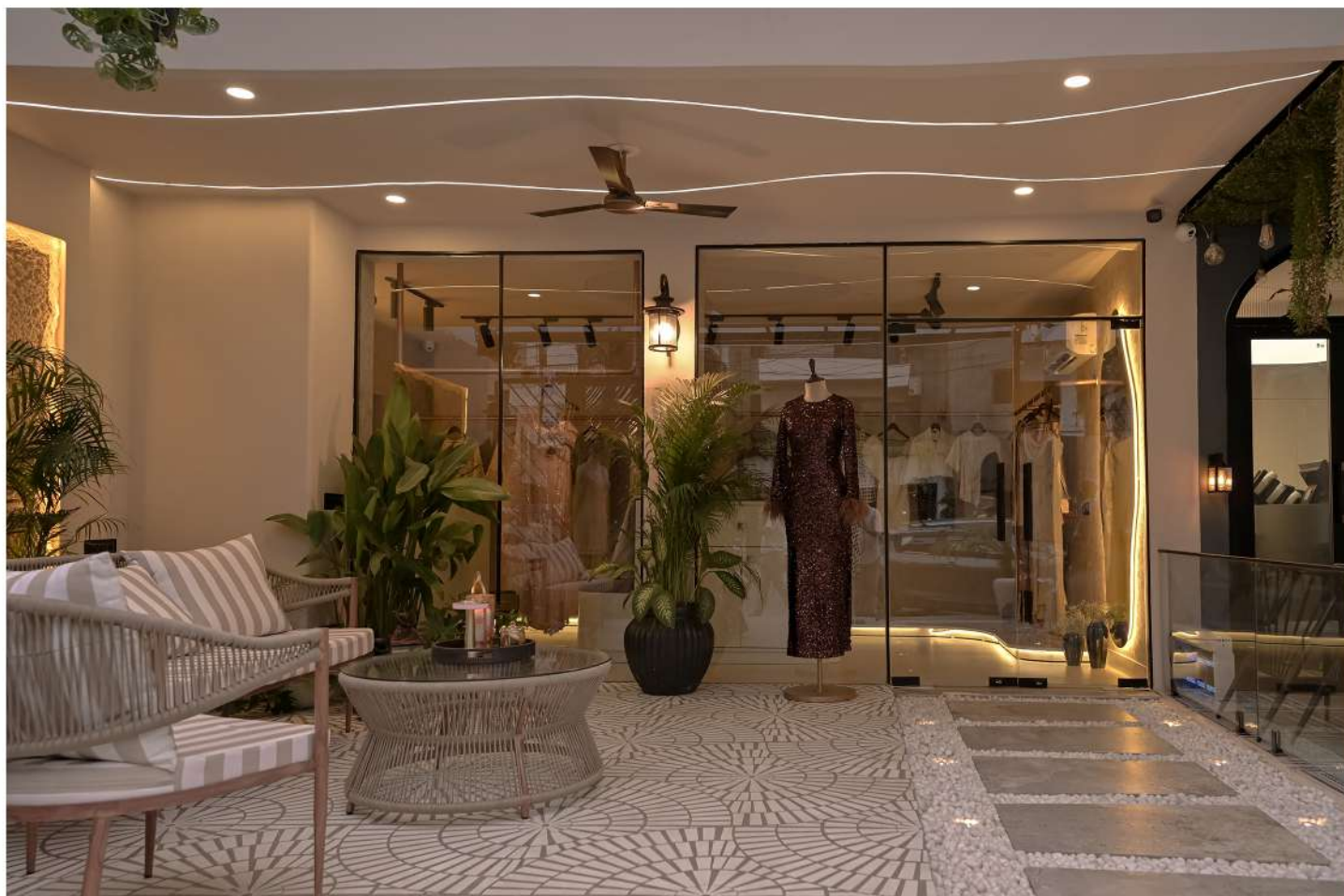
The interplay of glass, terrazzo-inspired flooring, and tactile finishes allows the boutique to feel expansive and immersive. Clothes are treated as sculptural inserts within a neutral gallery-like shell, supported by integrated lighting and thoughtfully placed green elements that introduce softness and rhythm.

Our intervention is a study in creating emotional resonance through spatial choreography, where every detail, from the patio entry to the curated ceiling light, speaks of quiet luxury and intentional design.

WHAT WAS YOUR FAVORITE DESIGN
ELEMENTS ASSOCIATED WITH THIS
PROJECT AND WHY?

VISHAKHA & ANANT : The spatial narrative unfolds with fluid transitions, soft edges, and a minimal material palette that allows the Clothes to breathe.

A highlight of the design is the use of a **stretch ceiling**, strategically backlit to emulate a natural skylight effect. This not only enhances ambient light in the compact space but also offers a striking design gesture that elevates the spatial mood.





HOW DO YOU TAKE FORWARD THE PROCESS OF DESIGNING A RETAIL STORE FOR A SPECIFIC BRAND? WHAT KEY DESIGN FACTORS-ELEMENTS YOU LIKE TO EXPERIMENT WITH TO CREATE A FUNCTIONAL YET AESTHETIC VALUE IN COORDINATION WITH THE BRANDS ETHOS?

VISHAKHA & ANANT :

Designing a retail store for a specific brand is a multidimensional process that blends strategic thinking, creativity, and functional planning. It's about translating a brand's ethos into spatial experiences that engage customers, drive sales, and build loyalty.

We incorporate a structured design approach exploring key factors that involve detailed brand immersion & thorough research while establishing spatial planning creating a functional design. Materiality, color play, and efficient lighting is definitely a major component for every interior designer. The brand elements stitched with a effluent storytelling integration creates a specific design palette for the associated brand which helps us to experiment and innovate.

check full story at
www.designessentiainmagazine.com

SBK Office

by ARTH DESIGN X STUDIO BLUKEY

location : Madhya Pradesh, India

principal designers :
AYUSH JAGNANI, UTSAV AGRAWAL

photographer : STUDIO BLUKEY



DESIGN
ESSENTIA
architecture & design magazine



*//BELOW;
AYUSH JAGNANI, UTSAV AGRAWAL (FROM LEFT),
PRINCIPAL DESIGNERS
AT ARTH DESIGN.*

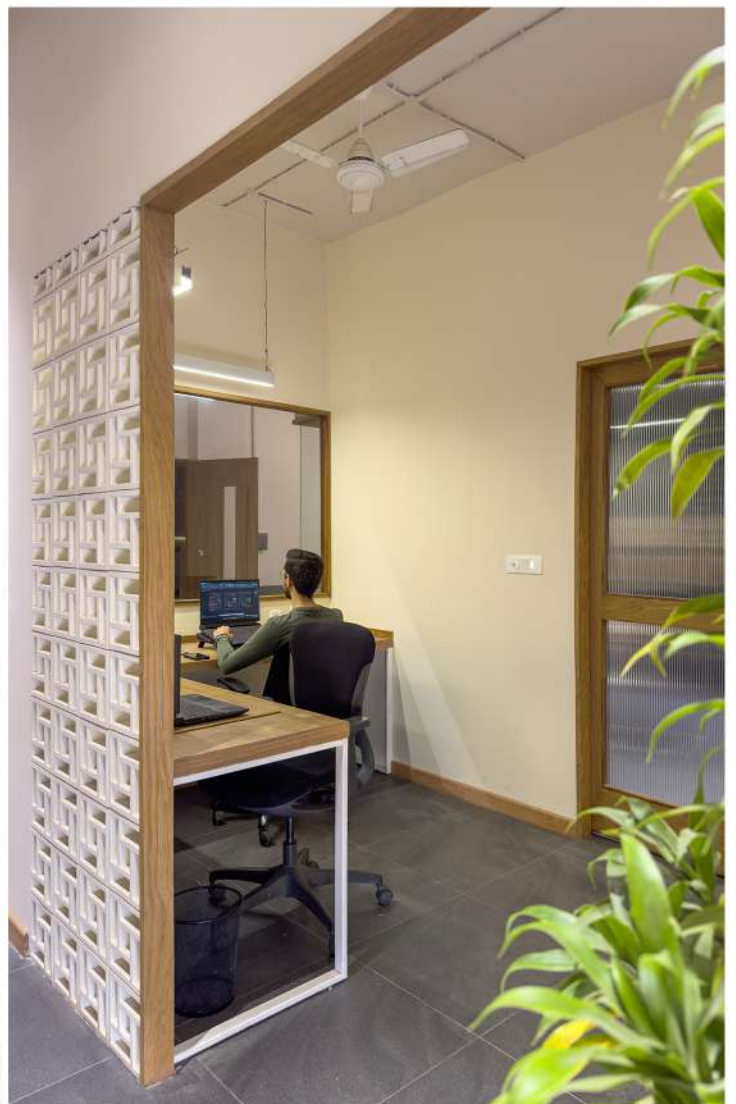
*//ON RIGHT;
STUDIO BLUKEY OFFICE, IN MADHYA
PRADESH, INDIA.
PHOTOGRAPHER: STUDIO BLUKEY*

TELL US SOMETHING ABOUT YOUR STUDIO'S DESIGN PHILOSOPHY?

AYUSH & UTSAV : At “Arth Design” we believe in “Crafting Meaningful Spaces” where culture, material and functionality meet.

Our process revolves around a people first policy where we listen deeply, co-design with transparency and keep the client at the center from brief to handover. For us planning drives aesthetics with clear flow, maintainability and clam timeless palettes over short-lived trends. Zoning, lighting and experiential touchpoints are what guide how our spaces are felt and experienced whether it's a home, workplace or retail.

Every decision of ours is thought through, documented and delivered with utmost integrity with no commissions or kickbacks and openness to clients and vendors. The outcome of it all, spaces that feel authentic, durable and uniquely the clients.



TELL US SOMETHING ABOUT THIS PROJECT? WHAT WAS THE CONCEPT BEHIND ITS DESIGN INCEPTION?

AYUSH & UTSAV : Studio BluKey's Office is a compact 500sqft workspace of an interior fit-out firm. This very profile of the brand became our inception idea, to make the office a material narrative of the brand where raw meets refined.

Over a formulaic corporate look we preferred honest textures and contrast to communicate the process and craft. The plan prioritized clear circulation and daylight with zones defined through materials rather than solid walls.

The palette was disciplined with cementitious surfaces, warm woods and soft inserts giving the space a calm yet expressive feel. The resulting space is a small office that reads like a built brochure efficient, tactile and aligned with Studio BluKey's ethos.

WHAT WAS YOUR FAVORITE DESIGN ELEMENTS ASSOCIATED WITH THIS PROJECT AND WHY?

AYUSH & UTSAV : Our favourite element of the space would be the perforated cement block partition and the wood-concrete dialogue. The block wall is polished on one face and intentionally left raw on the other making a single material perform as screen while celebrating its various textures and keeping the footprint visually open. Pairing polished teak and oak with raw cement panels created a contrast that suits a fit-out firm and showed evidence of craft beside the honesty of structure. These choices together with many more helped us formulate a process vs outcome contrast and deliver depth, zoning and identity with minimal means.





HOW DO YOU TAKE FORWARD THE PROCESS OF OFFICE INTERIORS WITH RESPECT TO DESIGN? WHAT KEY DESIGN FACTORS-ELEMENTS YOU LIKE TO EXPERIMENT TO CREATE A FUNCTIONAL YET AESTHETIC VALUE FOR TODAY'S WORK SPACES?

AYUSH & UTSAV :

Our office-interiors design process starts with a brand decode and workflow mapping, what should the space communicate and how it should work. We test layouts for adjacencies, daylight and acoustic privacy keeping utilities like power and data integrated into the furniture for cleaner surfaces.

As for materials we usually keep the palette tight, durable and low maintenance with one strong contrast to avoid formulaic results. We keep our lighting layered with task lighting at work desk, bright and comfortable ambient lighting for collaboration and accent light to highlight details. Lastly, we close with ergonomic furniture, built-in storages and curated soft layer (fabrics and arts) to humanize the palette. Throughout the process our aim stays to give the space functional clarity all week around with a quite underlying iconic character.

check full story at
www.designessentiainmagazine.com

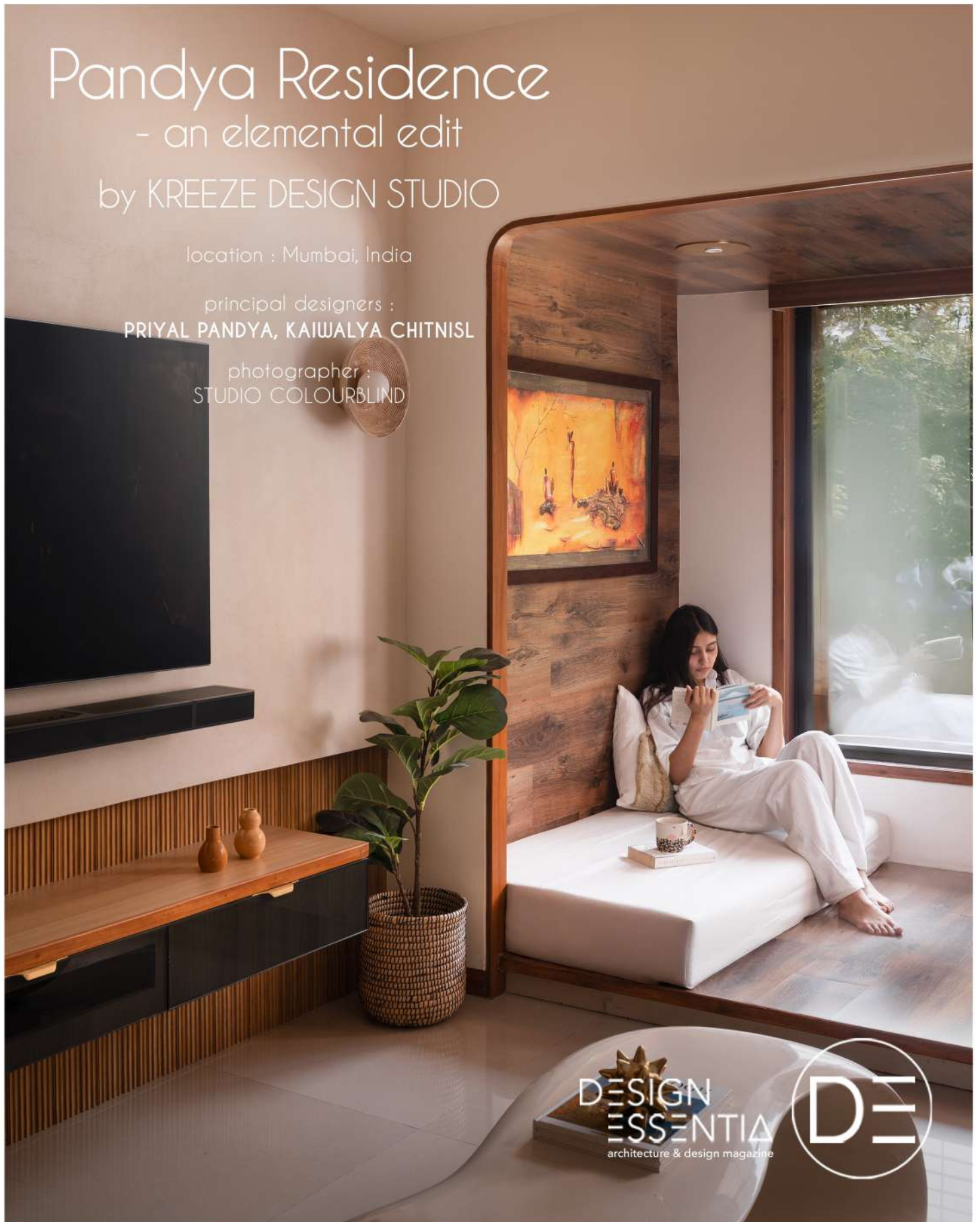
Pandya Residence - an elemental edit

by KREEZE DESIGN STUDIO

location : Mumbai, India

principal designers :
PRIYAL PANDYA, KAIWALYA CHITNISL

photographer :
STUDIO COLOURBLIND



*//BELOW;
PRIYAL PANDYA, KAIWALYA CHITNIS (FROM LEFT),
PRINCIPAL DESIGNERS
AT KREEZE DESIGN STUDIO.*

*//ON RIGHT;
PANDYA RESIDENCE, IN MUMBAI, INDIA.
PHOTOGRAPHER: STUDIO COLOURBLIND*

TELL US SOMETHING ABOUT YOUR STUDIO'S DESIGN PHILOSOPHY?

PRIYAL & KAIWALYA : At Kreeze Design Studio, we believe design is deeply personal & unique to every individual, yet tied together by a common language that defines our work. That language is the quiet presence of freshness and lightness, a quality that may not always be seen, but is always felt.

For us, design is not just about how a space looks, but about how it makes you feel. This subtle sense of ease and quiet luxury is what we strive to weave into every project — creating spaces that breathe, uplift, and endure.



WHAT WAS YOUR FAVORITE DESIGN ELEMENTS ASSOCIATED WITH THIS PROJECT AND WHY?

PRIYAL & KAIWALYA :

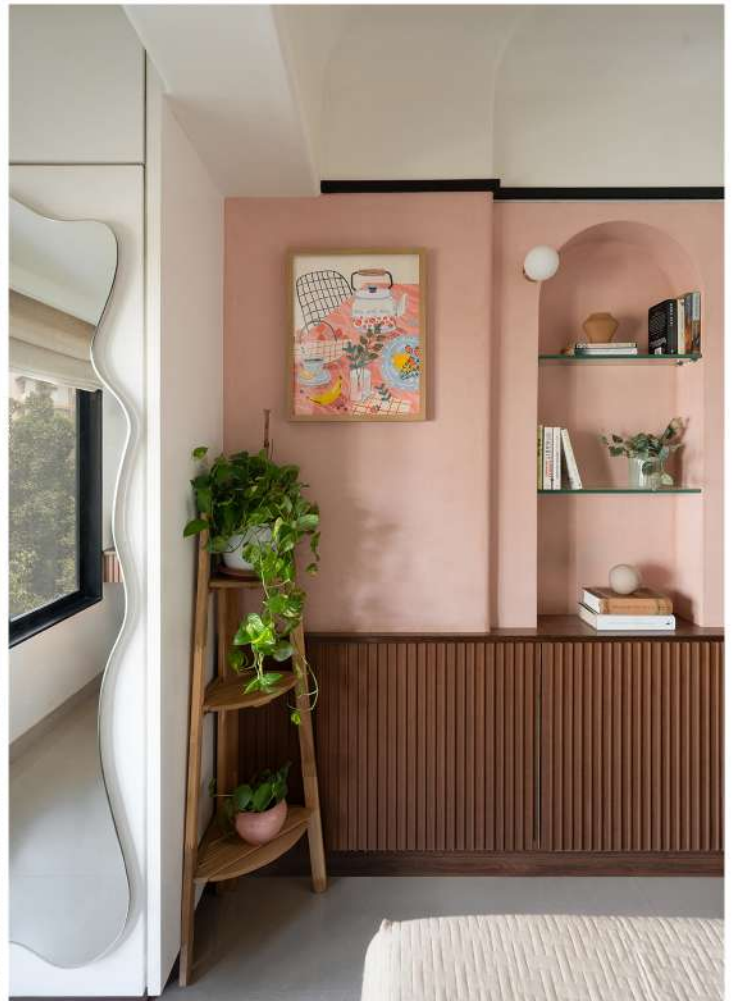
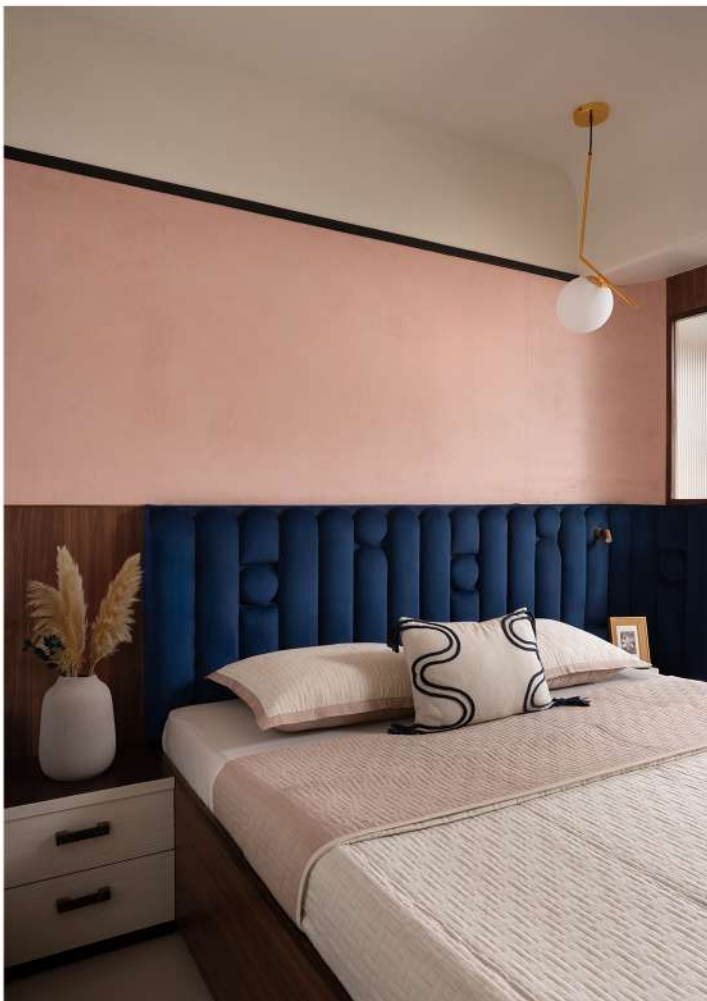
TELL US SOMETHING ABOUT THIS PROJECT? WHAT WAS THE CONCEPT BEHIND ITS DESIGN INCEPTION?

PRIYAL & KAIWALYA : A dream project for our clients - a residence in Mumbai, India envisioned as a space that is both timeless and functional.

Every detail was crafted with subtlety: from neutral tones and delicate textures to layered lighting, wallpapers, and refined finishes. A quiet play of simplicity and elegance, designed to feel effortless yet deeply personal.

The Daughter's Room – A space that balances subtlety with bold character. The soft curves bring fluidity and warmth, while the rusty, earthy pink walls drawn from the timeless ruins of Jaipur lend it a unique personality. Gentle yet grounded, it reflects both playfulness and serenity. (below)

The Kitchen – The true soul of the home. Though compact, it was designed to the minutest detail: platform height, drawer utilities, and every corner tailored to the client's usage. The palette draws from the natural greens of food, keeping it fresh and vibrant. To make the small footprint feel light yet functional, we chose quartzite for the platform – a robust material with the elegance of marble, but with far greater resilience. (page 101)





WHAT IS YOUR IDEA OF A PERFECT RESIDENCE A DESIGNER FOR ANY CLIENT?
WHAT SHALL BE THAT PRIME DESIGN FACTOR THAT MAKES A HOUSE A HOME?

PRIYAL & KAIWALYA :

For us, a perfect residence is not defined by scale or style, but by how deeply it resonates with the people who live in it.

The prime design factor that transforms a house into a home is the feeling it evokes a sense of comfort, ease, and quiet luxury that goes beyond what is seen, and is instead felt in every corner.

This is where our philosophy finds its truest expression: design that breathes, that carries freshness and subtle elegance. But ultimately, what makes a house a home are the people themselves — our clients. Their stories, their lives, and their way of inhabiting a space are what truly bring design to life.

check full story at
www.designessentiamagazine.com



@demagazineproducts



@demagazineindia



PRESS KIT REQUIREMENTS FOR PUBLICATION

- Project Brief + fact file
(min 300 words)
- Project images without watermark
(with photographer credits)
- Principal designers photograph

Note:

Please send the press kits through an online data transfer medium only.

(dropbox / google drive; no we-transfers)

The project entry will go through a shortlisting process in order to get published.

Email

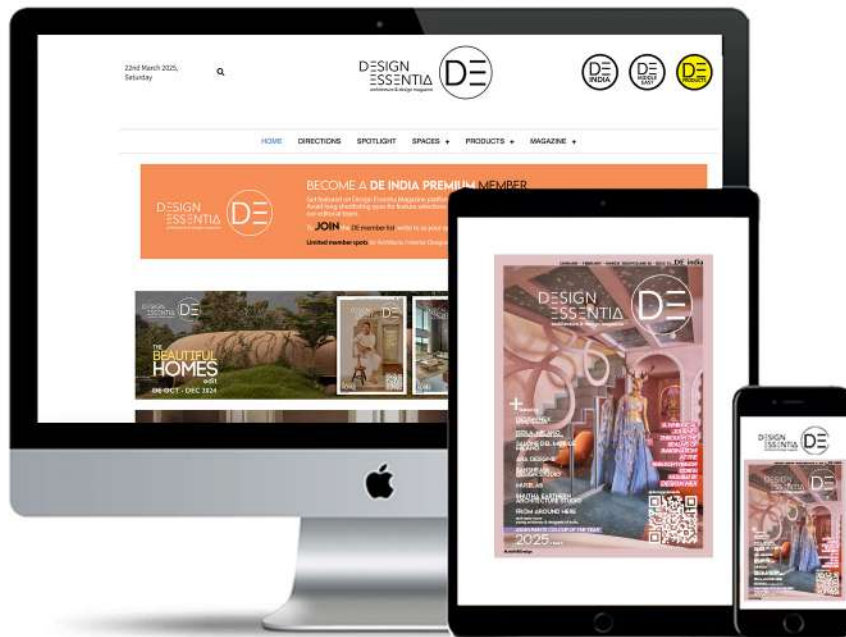
info@designessentiamagazine.com
(TEL) +91-9910756319

Log on to

www.designessentiamagazine.com

Lets Talk Design

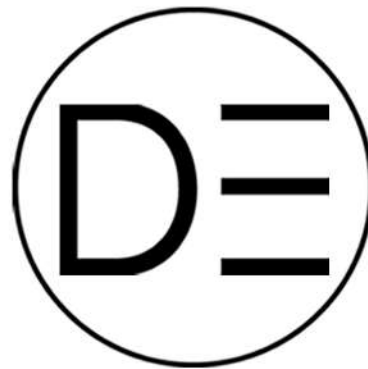
WANT TO GET FEATURED
WITH DE INDIA?



SEND IN YOUR PRESS-KITS
email us at info@designessentiaindia.com

www.designessentiaindia.com

DESIGN
ESSENTIAL
architecture & design magazine





DESIGN
ESSENTIA
architecture & design magazine

